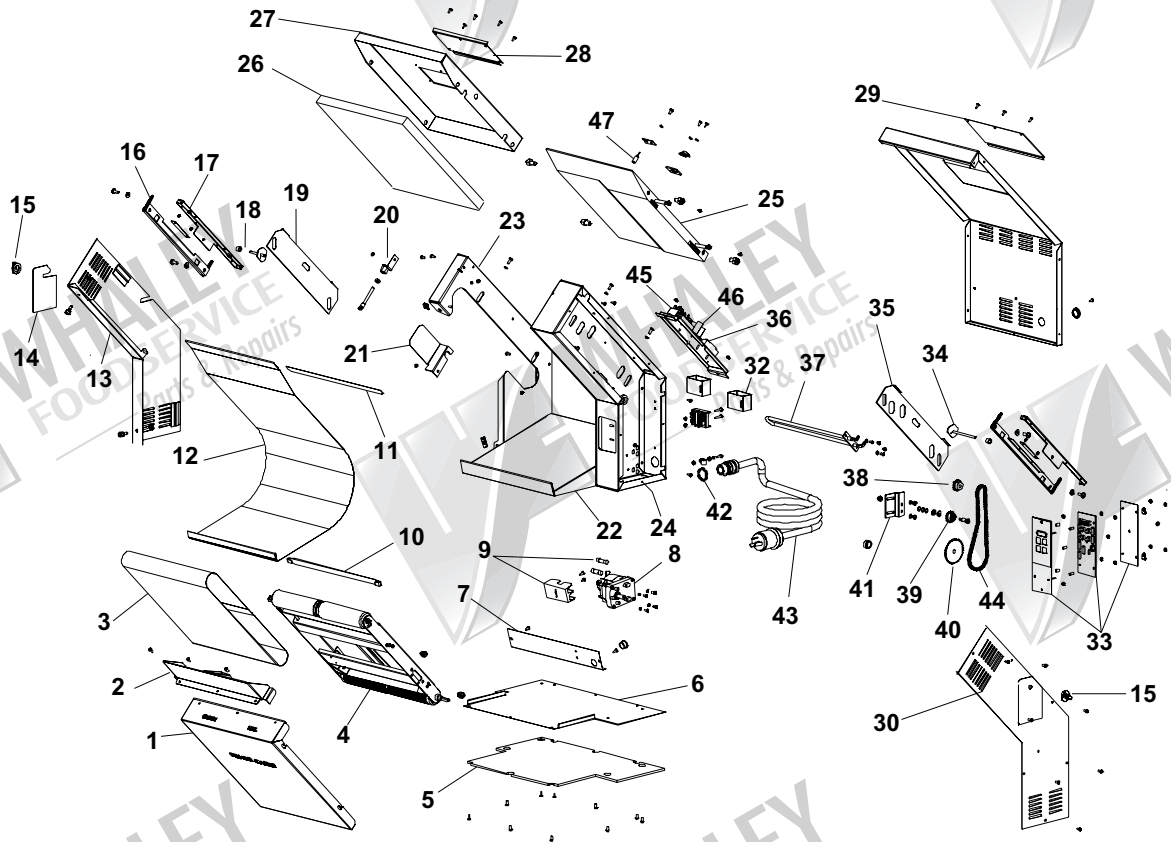


# Toaster TX-208BK

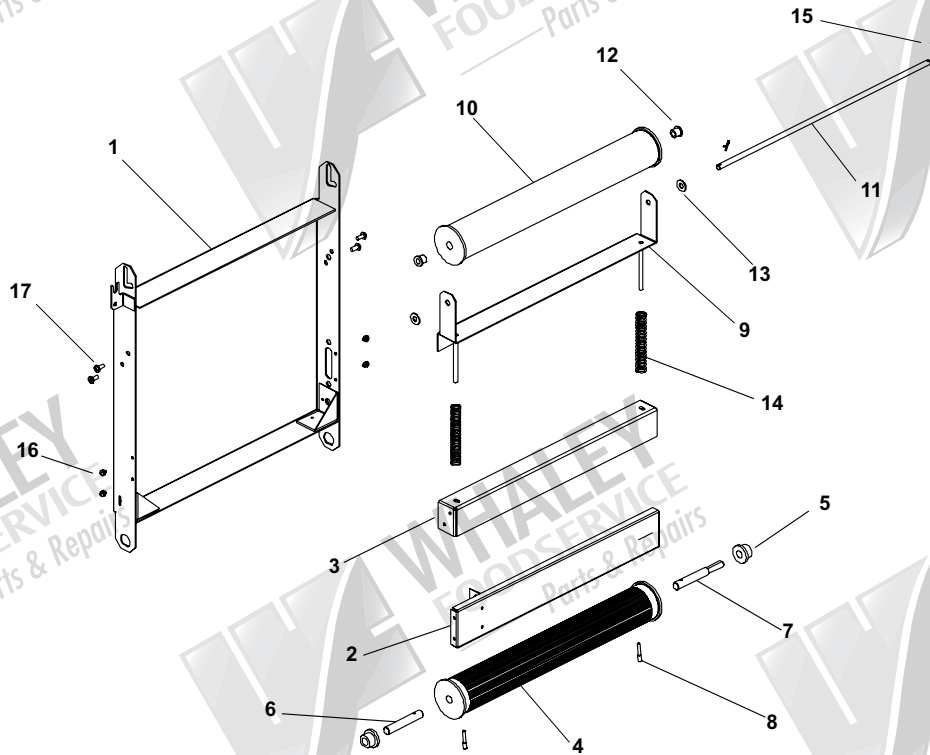


ITEM NO.	PART NO.	DESCRIPTION
1	537-634	Front Cover Assembly
2	537-618	Bun Chute
3	537-419	Rubber Belt
4	537-330S	Conveyor Assembly
5	537-338	Base Pad
6	537-320	Bottom Plate
7	537-661	Ramp Baffle
8	87-028TXAS	Motor
9	88-577	Fuse Block
	88-578	Fuse
10	537-383	Retainer Bar Lower
11	537-378	Retainer Bar Upper
12	537-403-3S	Teflon Sheet (Pkg. 3)
13	537-333	LH Cover
14	537-604	Bun Crush Overlay
15	70-050	Bun Crush Adj. Knob (2 qty.)



ITEM NO.	PART NO.	DESCRIPTION
16	537-298	Cam Bracket
17	537-649	Guide Bracket
18	537-329	LH Cam Shaft
19	537-300	LH Slide Plate
20	537-381	Conveyor Bracket
21	537-382	Conveyor Bracket
22	537-658	Ramp
23	537-336	LH Upright
24	537-335	RH Upright
25	537-295S	Platen
26	537-337	Insulation
27	537-296	Heater Housing
28	537-366	Heater Housing Plate
29	537-409	Rear Panel
30	537-332	RH Cover
31	537-396	Bun Thickness Overlay

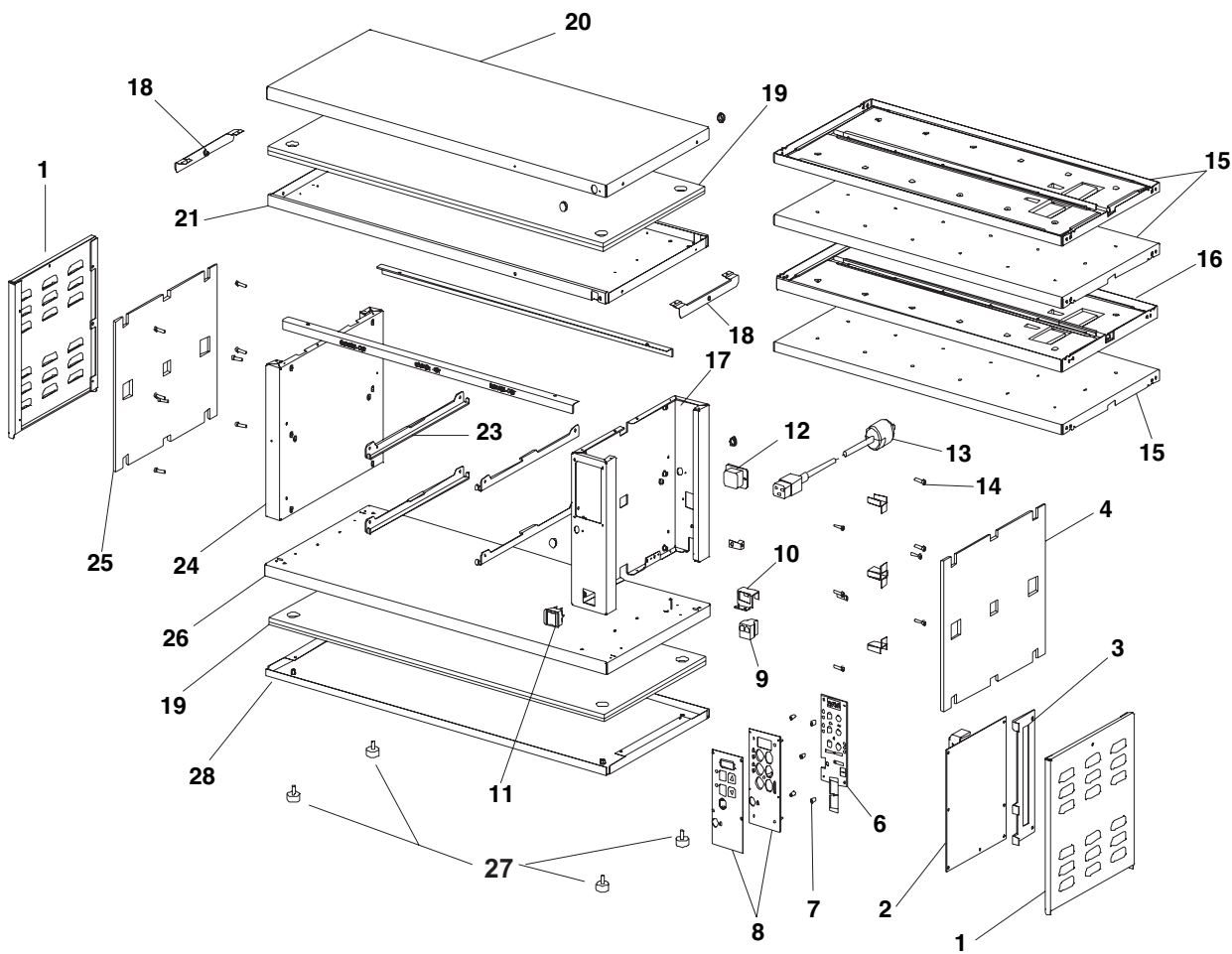
ITEM NO.	PART NO.	DESCRIPTION
32	537-665	Hi-Temperature Switch
33	537-663S	PC Board & Overlay Assembly
34	537-328	RH Cam Shaft
35	537-637	RH Slide Plate
36	65-058S	Heater Relay
37	537-341S	Heater
38	86-313	Sprocket (10 Tooth)
39	537-408	Idler Sprocket
40	537-348S	Sprocket (32 Tooth)
41	537-347	Idler Bracket
42	66-034	Strain Relief
43	72-190S	Power Cord
44	537-627	Drive Chain
45	65-048S	Power Relay
46	537-388S	Transformer Assembly
47	537-400	Temperature Probe



ITEM NO.	PART NO.	DESCRIPTION
1	537-351	Frame
2	537-354	Air Shield
3	537-349	Cross Brace
4	537-412	Lower Roller
5	537-370S	Lower Bearing (Pack of 2)
6	537-318S	Lower Shaft (Short)
7	537-316S	Lower Shaft (Long)
8	197-279	Pin
9	537-334	Slide Bracket

ITEM NO.	PART NO.	DESCRIPTION
10	537-411	Upper Roller
11	537-315	Upper Shaft
12	537-317S	Upper Bearing (Pack of 2)
13	79-055S	Washer (Pack of 2)
14	81-017S	Spring (Pack of 2)
15	86-272S	Cotter Pin (Pack of 2)
16	69-011S	Rivet (Pack of 4)
17	76-640	Screw

# DHB-BK Series Product Holding Bin



*(Illustration on page 491.)*

ITEM NO.	PART NO.	DESCRIPTION
1	541-316	Side Panel Cover, Side
2	541-735S	Main P. C. Board Kit
3	541-799	P.C. Board Bracket
4	541-317	Insulation
5	541-326	Wire Chase
6	541-333S	Display P.C. Board Kit
7	89-955	Spacer
8	536-802S	Overlay Kit
9	86-118	Hole Plug
10	541-320	Hold Down Bracket
11	78-219S	Power Switch
12	88-609	Power Inlet
13	72-200-25S	Power Cord Kit
14	76-724	Screw, Socket, 8-32 x 3/4
15	541-375S	Lower Heater Assembly (230 Volt)
16	541-376S	Upper Heater Assembly (230 Volt)
17	541-656	Chassis, Right
18	541-129	Side Cover Bracket

ITEM NO.	PART NO.	DESCRIPTION
19	541-369	Insulation Bottom
20	541-329	Top Cover
21	541-324	Header
22	541-650	Trim
23	541-383	Shelf Bracket
24	541-488	Chassis, Left
25	541-317	Insulation
26	541-606	Base
27	197-232	Foot
28	541-322	Bottom Cover
	541-723B	Black Pan Covers
	541-520	Cable, Prince Castle
	940-0504	Cable, Radio Shack
	95-1212-25	Tel Cable RJ12/RJ
	541-636	Rack, Guide w/ Hand
	541-TSMC	Button Bars (Main)
	541-TSAC	Button Bars (Aux)

## WE HAVE ONE OF THE LARGEST INVENTORIES OF OEM PARTS IN THE NATION!

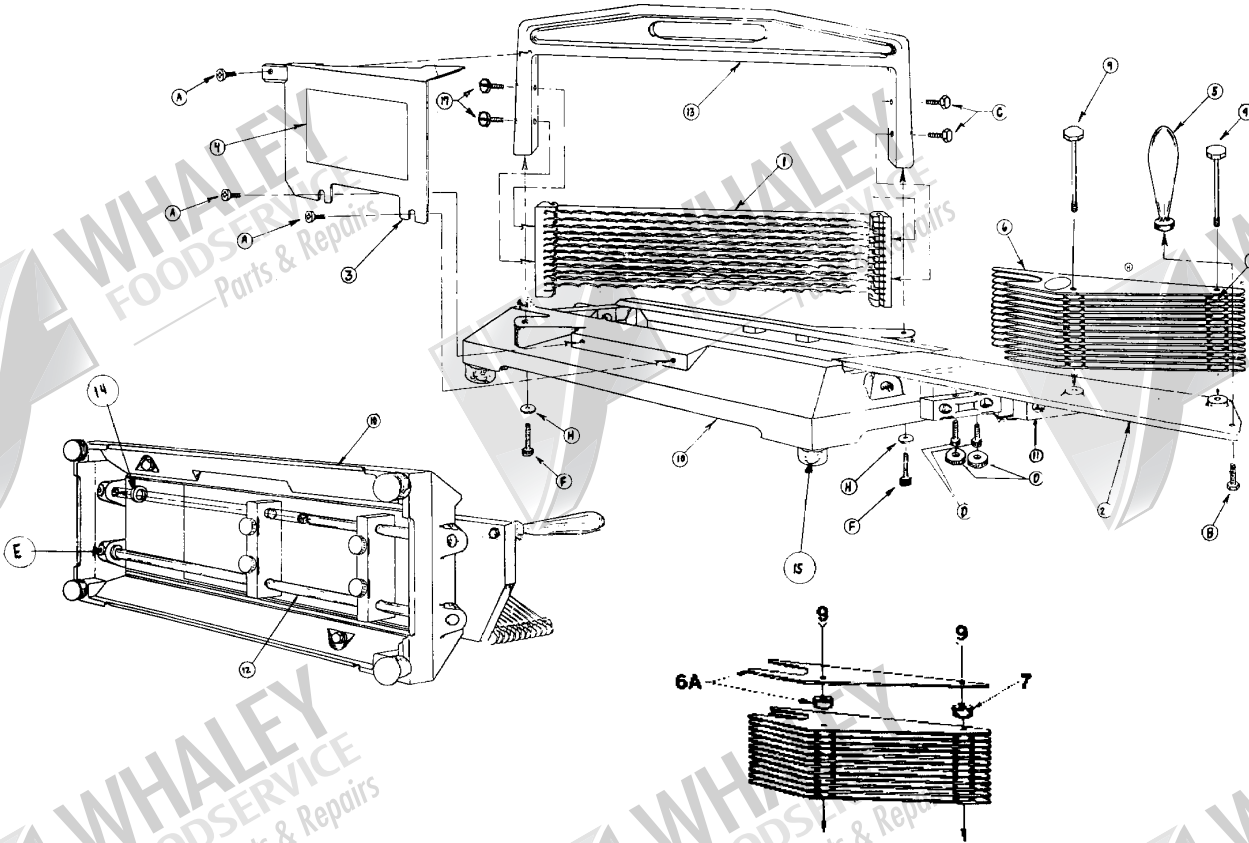
*Our inventory of parts serves the needs of more than 100 Whaley Foodservice Technicians, and meets the needs of our parts customers as well. This inventory is managed by our state-of-the-art computer system which counts every individual transaction to continuously adjust stocking levels.*

919-AAS  
919-ABS  
919-ACS  
919-ADS

# 919 Tomato Slicer

PRINCE CASTLE

919 Tomato Slicer



**IN A HURRY?**

Express shipping is available.



16



**919-168S  
Hex Head  
Wrench  
(Provided)**



**Optional  
912-107  
Cleaning Brush**

(Illustration on page 493.)

ITEM NO.	PART NO.	DESCRIPTION
1	919-87	Replacement Blade Set (3/16")
		919-AAS (14 Blades)
	919-88	Replacement Blade Set (1/4")
		919-ABS (10 Blades)
919-89	Replacement Blade Set (3/8")	
	919-ACS (7 Blades)	
	927-16	Replacement Blade Set (7/32")
2	919-142S	Carrier Plate (3/16" & 3/8")
		919-AAS & 919-ACS
	919-143S	Carrier Plate (7/32") 919-ADS
	919-144S	Carrier Plate (1/4") 919-ABS
3	919-125S	Safety Guard w/Mounting Screw
4	906-20	Instruction Label
5	919-114	Handle With Mounting Screws
		919-104
	919-106	Pusher Head Assembly (1/4") 919-ABS
	919-110	Pusher Head Assembly (3/8") 919-ACS
	919-108	Pusher Head Assembly (7/32") 919-ADS
6a	911-18	Pusher Head Plate with Spacers

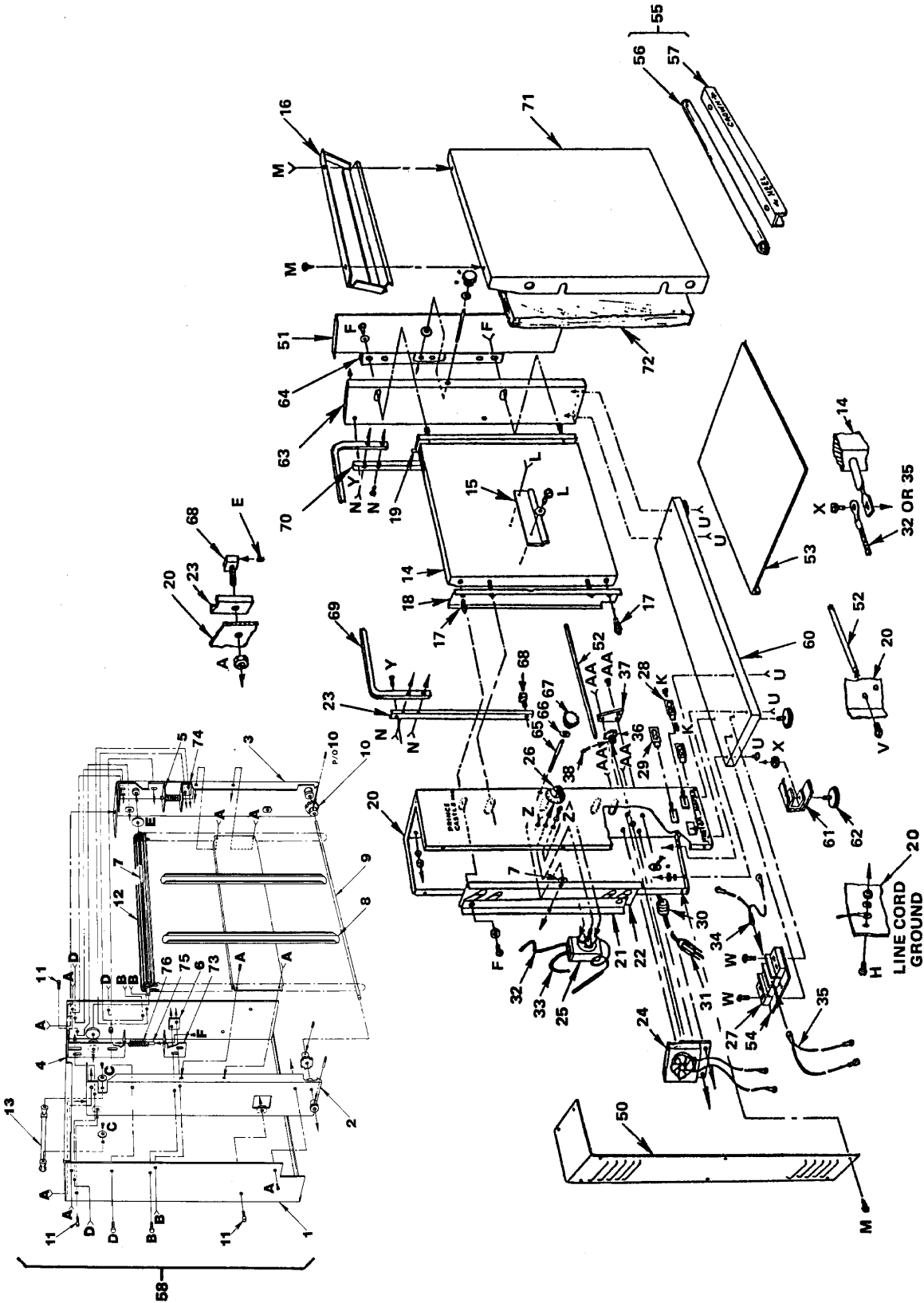
ITEM NO.	PART NO.	DESCRIPTION
7	919-127S	Pusher Head Spacers (Black 7/32")
	919-128S	Pusher Head Spacers (Gray 1/4")
	919-126S	Pusher Head Spacers (White 3/16" & 3/8")
9	919-19S	Pusher Head Bolts (Pkg. of 2)
10	919-122S	Complete Base
11	919-121S	Bearing Block With Mounting Screws
		(Pkg. of 2)
12	919-14	Guide Rod
13	919-80S	Bridge With Mounting Screws
14	919-17S	Guide Rod Cushions (Pkg. of 4)
15	919-18	Rubber Feet (Pkg. of 4)
16	953	Core-It
A	76-238	Phillips Head Screw 10-24 X 1/2"
B	76-440	Hex Head Screw 1/4-20 X 3/4"
C	76-553S	Hex Head Screw 1/4-20X 1-3/8" (Pkg. of 4)
D	76-593S	Screw with Knob (Pkg. of 4)
E	76-202	Socket Head Set Screw
F	79-132	Lock Washer
	76-485S	Socket Head Screw 1/4-20X 1/8" (Pkg. of 6)
H	79-141	Aluminum Flat Washer

197  
297

# Series 197 and 297 Vertical Bun Toaster

PRINCE CASTLE

Series 197 and 297 Vertical Bun Toaster

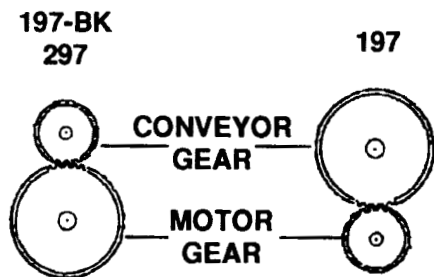


(Illustration on page 495.)

ITEM NO.	PART NO.	DESCRIPTION
1	197-327	Conveyor Housing
2	197-335	Left Shaft Carrier Assembly
3	197-334	Right Shaft Carrier Assembly
4	197-328	Left Shaft Carrier Adjustment Assembly
	62-030S	Bearing Flange (Pkg. of 2)
5	197-329	Right Shaft Carrier Adjustment Assembly
6	197-293	Nut Plate Assembly
7	197-280	Shaft Assembly
8	197-295	Chain Support Weldment
9	197-37	Driven Shaft
10	197-277	Sprocket Kit (Pkg. of 4)
11	197-94	Conveyor Slide
12	89-133	Chain Assembly
	89-590	Conveyor Chain Link
13	346-5	Handle
14	197-230	Platen Assembly (110 Volt)
	197-231	Platen Assembly (220 Volt)
15	197-29	Capillary Retainer
16	197-13	Lead Pan Weldment
17	197-41	Shouldered Spacer
18	197-96	Bun Fence, Motor Side
19	197-97	Bun Fence, End Side
20	197-122	Motor Housing with Graphics
21	197-90	Motor Side Plate Weldment
22	197-87	Motor Housing Side Baffle
23	197-124	Conveyor Guide
24	197-83	Motor (110 Volt)
	197-119S	Motor (220 Volt)
	89-332	Motor Fan
25	197-140	Thermostat with Knob
26	70-012	Black Thermostat Knob
27	197-4	Terminal Block
28	197-6	Switch

ITEM NO.	PART NO.	DESCRIPTION
29	197-3	Pilot Light (110 Volt)
	71-034	Pilot Light (220 Volt)
30	66-004	Bushing
31	197-438S	Power Cord
32	90-066	Wire
33	197-178	Wire
34	197-179	Wire
35	197-180	Wire
36	197-436S	Gear with Pin (Large)
37	197-131	Gear Guard
38	197-134	Gear Pin
46	197-436S	Gear with Pin (Small) (Not Supplied with 197-322S Self-Adjusting Conveyor.)
50	197-114	Motor Cover with Graphics
51	197-20	End Cover
52	197-95	Tray Support
53	197-33	Crumb Tray
54	197-5	Marker Strip
55	197-259	Release Sheet Conversion Kit
56	197-260	Release Sheet (Pkg. of 2)
57	197-258	Release Sheet Clamping Bar (Not Available As Separate Piece Included in 197-259 Conversion Kit)
58	197-322S	Self Adjusting Conveyor
60	197-111	Base Weldment
61	197-228	Mounting Foot Bracket
62	197-232	Mounting Foot
63	197-47	End Housing
64	197-89	Right Hand Side Plate Bracket
65	197-88	Adjustment Screw
66	79-055	Brass Flat Washer
67	197-185S	Black Knob with Set Screw (Pkg. of 2)
68	197-16	Conveyor Stop

► NOTE: The model no.197 toaster essentially Uses the same parts as the model No.197-BK and model No.297 toasters. the major difference is: on the 197 toaster the 197-176 small gear with pin is on the motor and the 197-177 large gear with pin is on the conveyor. On model No.297 and 197-BK the gears are reversed.



ITEM NO.	PART NO.	DESCRIPTION
69	197-124	Support Bar
70	197-124	Conveyor Guide
71	197-48	Heater Housing With Graphics
72	197-30	Insulator
73	197-323	Left Support Bracket
74	197-324	Right Support Bracket
75	197-332	Guide Pin
76	81-015	Compression Spring
A	76-499	Pan Head Screw 10-32 X 1/4

ITEM NO.	PART NO.	DESCRIPTION
B	76-501	Hex Head Screw 10-32 X 9/16
C	76-129	Binder Head Screw 10-24 X 1/2
	79-037	Flat Washer 1/4 ID X 1 1/2 OD
D	197-333	Knurled Head Thumb Screw 10-32 X 1
	73-008	Hex Nut 10-32
	79-021	Flat Head Washer #10
E	62-030S	Bearing (Pkg. of 2)
F	76-064	Slotted Binder Head Screw 8-32 X 1/4
	79-094	Flat Washer
H	76-002	Binder Head Screw 6-32 X 1/4
	79-002	Washer I.T.T. #6
	73-002	Hex Nut 6-32
K	76-474	Brass Pan Head Screw 6-32 X 5/16
L	76-178	Self-Tapping Hex Head Screw 1/4-20 X 3/8
	79-039S	Spring Washer (Pkg. of 12)
M	76-156	Self-Tapping Phillips Pan Head Screw 8-3/8
N	76-432	Right Hand Screw 10-32 X 1-1/8
U	76-040	Binder Head Screw 10-32 X 3/8
	79-017	Split Lock Washer #10
V	76-129	Binder Head Screw 10-24 X 1/2
W	76-144	Self-Tapping Pan Head Screw 8-3/4
X	73-007	Hex Nut 1/4-20
Y	76-033	Flat Head Screw 10-32 X 1/2
	79-017	Split Lock Washer #10
	73-030	Hex Nut 10-32
Z	76-095S	Binder Head Screw 6-32 X 1/4 (Pkg. of 12)
	79-106	Flat Washer #6
AA	76-225	Self-Tapping Pan Head Screw 10-32 X 3/8



**REMEMBER...**

The parts you see here are just a sample of what we carry!