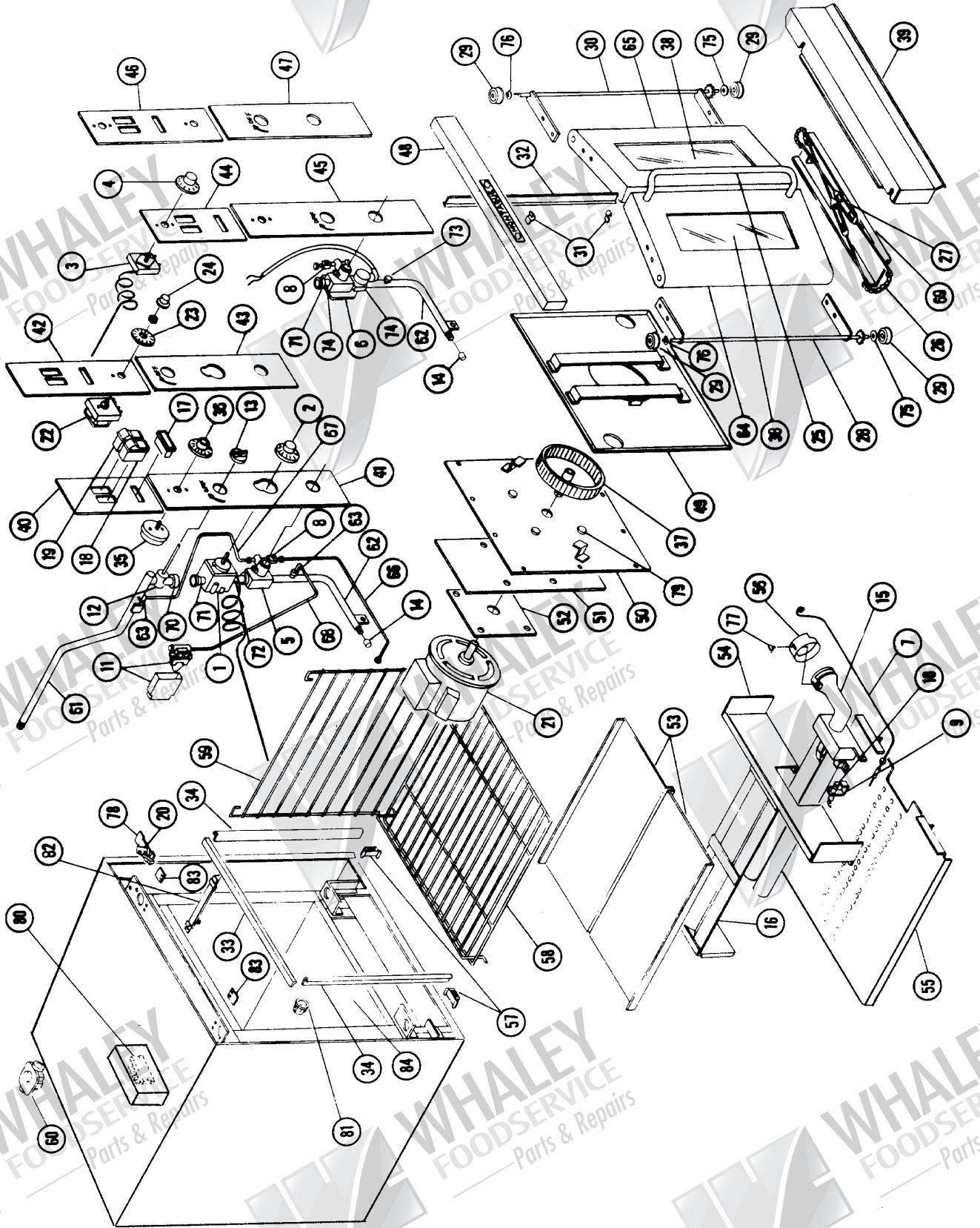


Vectaire Gas Convection Ovens (Vertical Door)

70, 115
2-70 & 2-115



115A Series Vertical Door Model

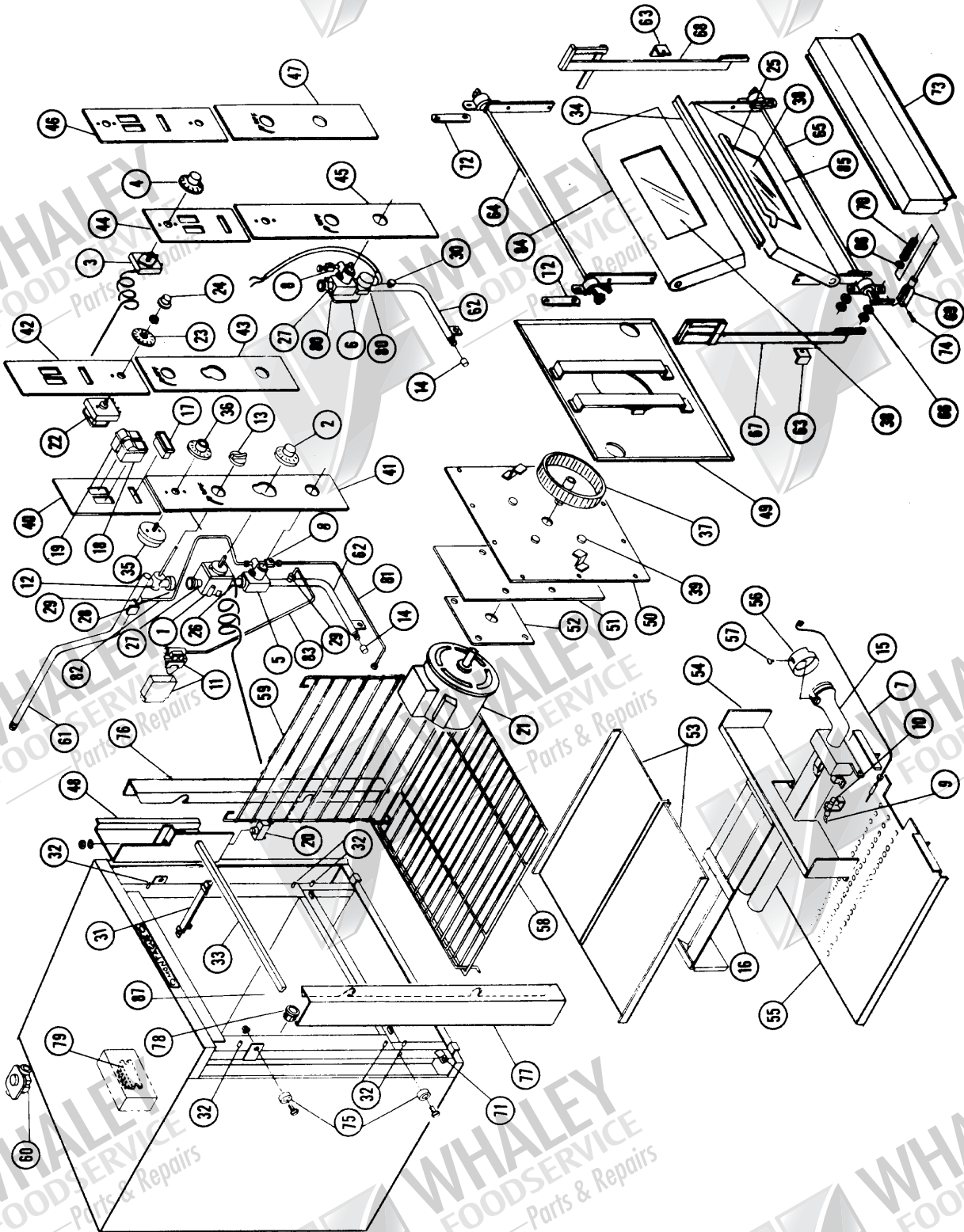
ITEM NO.	PART NO.	DESCRIPTION
1	3395-2	Thermostat, Gas (FDO)
2	1024-3	Dial, Thermostat-Gas
3	3499-1	Thermostat, Electric (KX)
4	1979-8	Dial, Thermostat-Electric
5	1025-1	Safety Valve, Gas Thermostat
6	1028-6	Safety Valve, Elec Thermostat. (c#12)
6	1031-6	Safety Valve, Elec. Thermostat (c#1-11)
7	1036-7	Thermocouple
8	1051-0	Pilot Valve
9	1033-2	Pilot Burner-Natural Gas
9	1034-0	Pilot Burner-Propane Gas
10	2220-9	Orifice, Pilot-Natural Gas
10	2154-7	Orifice, Pilot-Propane Gas
11	1037-5	Pressure Switch
12	1038-3	Main Valve
13	2122-9	Knob, Main Valve (Red)
14	1044-8	Orifice, Main Burner-Natural Gas
14	1042-1	Orifice, Main Burner-Propane Gas
15	4349-4	Main Burner-Natural Gas
15	4355-9	Main Burner-Propane Gas
16	4344-3	Deflector SS
17	1295-5	Light, Indicating "Burner" (110V)
18	1293-9	Switch, Light
19	1305-6	Switch, Fan/Off/Cool
20	1300-5	Switch, Door
21	1402-8	Motor, 115/208-240V, 1PH 60Hz Baldor
21	2167-9	Motor, 115/208-240V, 1PH 60Hz Howell
21	1404-4	Motor, 230/440V, 3PH 60Hz Baldor
22	1406-0	Timer, Electric-110V
22	1407-9	Timer, Electric-220V
23	2204-3	Dial, Electric Timer
24	2041-9	Knob, Electric Timer
25	3173-9	Handle, Oven Door
26	2016-8	Chain, Oven Door
27	3172-0	Turnbuckle-with Rods
28	3239-5	Trunnion, Left
29	2014-1	Bearing, Oven Door
30	3585-8	Trunnion, Right
31	3414-2	Spring Clip, Door (2 each)
32	4379-6	Door Seal, Center-Metal
33	4376-1	Door Seal, Upper-Metal
34	4378-8	Door Seal, Side-Metal
35	2125-3	Timer, Mechanical
36	2043-5	Dial, Mechanical Timer
37	2123-7	Fan Wheel with Set Screw
38	2124-5	Window
39	3593-9	Firebox Panel, Clip Style SS
39	7068-8	Firebox Panel, Magnet Style SS
40	6967-1	Panel, Upper Gas Therm. (Mech. Timer)
41	4487-3	Panel, Lower Gas Therm. (Mech. Timer)
42	—	Panel, Upper Gas Therm. (Elec. Timer)
43	—	Panel, Lower Gas Therm. (Elec. Timer)
44	6958-2	Panel, Upper El. Therm. (Mech. Timer)
45	4459-8	Panel, Lower El. Therm. (Mech. Timer)
46	—	Panel, Upper El. Therm. (Elec. Timer)
47	—	Panel, Lower El. Therm. (Elec. Timer)
48	4575-6	Capping Panel, Upper Front SS
49	1522-9	Rear Fan Baffle, Porcelain
50	4375-3	Motor Mounting Plate
51	1757-4	Insulation Pad, Motor
52	4385-0	Spacer Plate, Motor
53	4583-7	Top, Burner Box Plate (2 piece)
54	7006-8	Front, Burner Box
55	7779-8	Perfed Bottom, Burner Box
56	4494-6	Air Shutter
57	2040-0	Magnet, Firebox Panel
58	1590-3	Rack, Oven Standard
59	1594-6	Rack Guide, Right
	1593-8	Rack Guide, Left
60	1039-1	Regulator-Natural Gas (3/4")
60	1040-5	Regulator-Propane Gas (3/4")
61	6851-9	Manifold, Main (3/4")
62	1099-5	Manifold, Lower (1/2")
63	1277-7	Fitting-1/8" NPT x 1/4" CC
64	3607-2	Door, Handle Side
65	3608-0	Door, Right Side
66	1229-7	Tube, Safety Valve to Pilot
67	1225-4	Tube, Manifold to Safety Valve
68	1226-2	Tube, Manifold to Pressure Switch
69	4399-0	Guard, Chain Assembly
70	1183-5	Union, 3/8"
71	1149-5	Nipple, 3/8" x 1-1/2"
72	1150-9	Nipple, 3/8" x 2"
73	1279-3	Plug, 1/8" NPT
74	1119-3	Bushing, 3/8" x 1/2" NPT
75	1904-6	Spacer, Door (1/2")
76	1961-5	Keeper, Door Trunnion
77	1860-0	Bolt, Wing 1/4-20
78	11869-9	Bracket, Door Switch
79	1945-3	Bolt, Motor Mounting
80	8584-7	Terminal Block
81	1408-7	Light Socket
82	6156-5	Holder, Capillary Tube
83	3488-6	Keeper, Door Bearing
84	1524-5	Oven Bottom, Porcelain
85	6949-3	Pilot Shield

MONTAGUE

Vectaire Gas Convection Ovens (Vertical Door)



Vectaire Gas Convection Ovens (Horizontal Door)



115Z Series Horizontal Door Model

ITEM NO.	PART NO.	DESCRIPTION
1	3395-2	Thermostat, Gas (FDO)
2	1024-3	Dial, Thermostat-Gas
3	3499-1	Thermostat, Electric (KX)
4	1979-8	Dial, Thermostat-Electric
5	1025-1	Safety Valve, Gas Thermostat
6	1028-6	Safety Valve, Elec Thermostat (c#12)
6	1031-6	Safety Valve, Elec. Thermostat (c#1-11)
7	1036-7	Thermocouple
8	1051-0	Pilot Valve
9	1033-2	Pilot Burner-Natural Gas
9	1034-0	Pilot Burner-Propane Gas
10	2220-9	Orifice, Pilot-Natural Gas
10	2154-7	Orifice, Pilot-Propane Gas
11	1037-5	Pressure Switch
12	1038-3	Main Valve
13	2122-9	Knob, Main Valve (Red)
14	1044-8	Orifice, Main Burner-Natural Gas
14	1042-1	Orifice, Main Burner-Propane Gas
15	4349-4	Main Burner-Natural Gas
15	4355-9	Main Burner-Propane Gas
16	4344-3	Deflector SS
17	1295-5	Light, Indicating "Burner" (110V)
18	1293-9	Switch, Light
19	1305-6	Switch, Fan/Off/Cool
20	1300-5	Switch, Door
21	1402-8	Motor, 115/208-240V 1PH 60Hz Baldor
21	2167-9	Motor, 115/208-240V 1PH 60Hz Howell
21	1404-4	Motor, 230/440V 3PH 60Hz Baldor
22	1406-0	Timer, Electric-110V
22	1407-9	Timer, Electric-220V
23	2044-3	Dial, Electric Timer
24	2041-9	Knob, Electric Timer
25	3173-9	Handle, Oven Door
26	1150-9	Nipple, 3/8" x 2"
27	1149-5	Nipple, 3/8" x 1-1/2"
28	1183-5	Union, 3/8"
29	1277-7	Fitting-1/8" NPT x 1/4" CC
30	1279-3	Plug, 1/8" NPT
31	6156-5	Holder, Capillary Tube
32	1944-5	"D" Bolt, 5/16" x 1"
33	4376-1	Door Seal, Upper-Metal
34	4381-8	Door Seal, Center-Metal
35	2125-3	Timer, Mechanical
36	2043-5	Dial, Mechanical Timer
37	2123-7	Fan Wheel with Set Screw
38	2124-5	Window
39	1945-3	Bolt, Motor Mounting
40	11752-8	Panel, Upper Gas Therm. (Mech. Timer)
41	11750-1	Panel, Lower Gas Therm. (Mech. Timer)

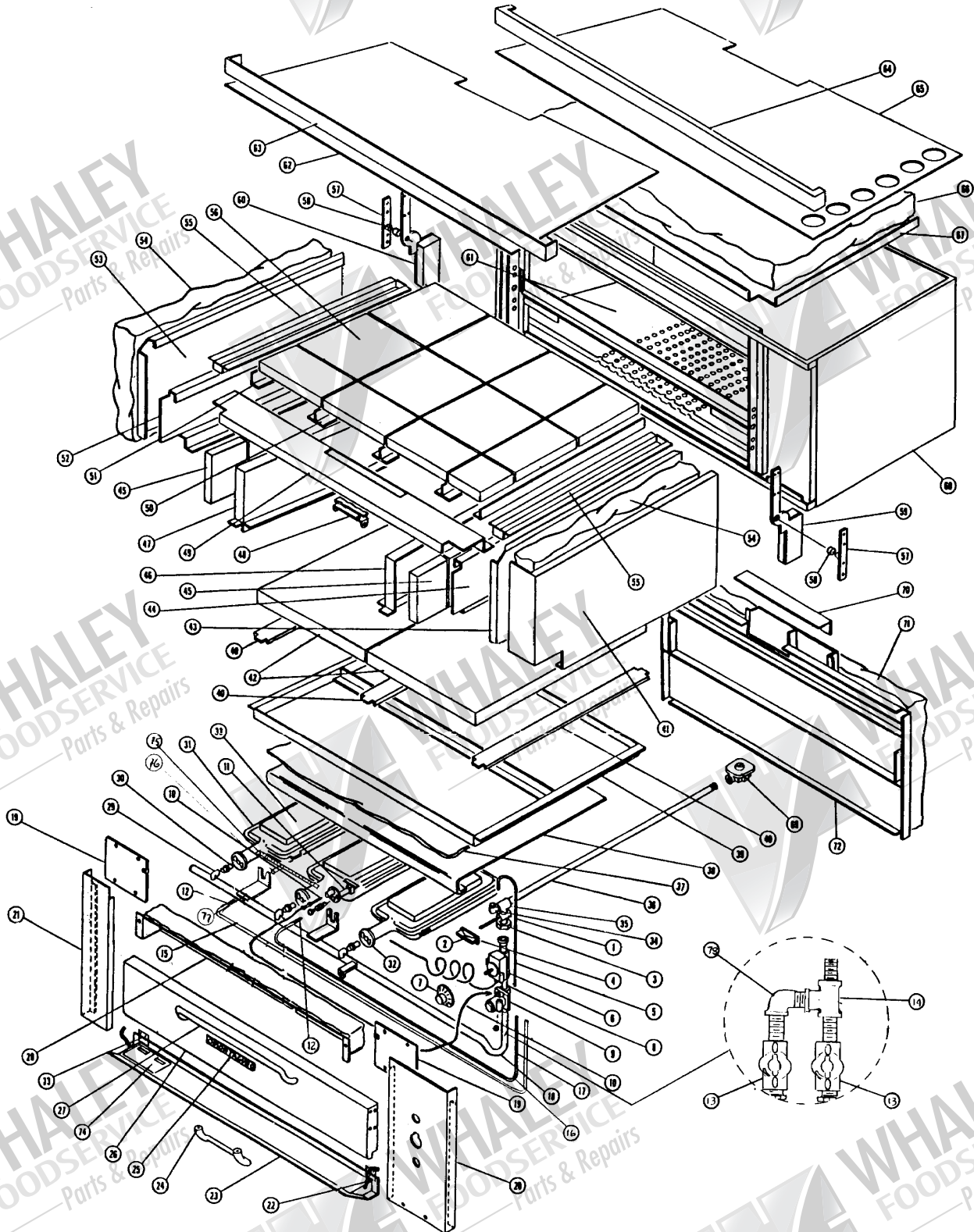
ITEM NO.	PART NO.	DESCRIPTION
42	4562-4	Panel, Upper Gas Therm. (Elec. Timer)
43	—	Panel, Lower Gas Therm. (Elec. Timer)
44	4309-5	Panel, Upper E.I. Therm. (Mech. Timer)
45	4308-7	Panel, Lower E.I. Therm. (Mech. Timer)
46	4564-0	Panel, Upper E.I. Therm.(Elec. Timer)
47	4563-2	Panel, Lower E.I. Therm.(Elec. Timer)
48	—	Panel, Switch Box Enclosure
49	1522-9	Rear Fan Baffle, Porcelain
50	4375-3	Motor Mounting Plate
51	1757-4	Insulation Pad, Motor
52	4385-0	Spacer Plate, Motor
53	4583-7	Top, Burner Box Plate (2 piece)
54	7006-8	Front, Burner Box
55	7779-8	Perfed Bottom, Burner Box
56	4494-6	Air Shutter
57	1860-0	Bolt, Wing 1/4-20
58	1590-3	Rack, Oven Standard
59	1594-6	Rack Guide, Right
	1593-8	Rack Guide, Left
60	1039-1	Regulator-Natural Gas (3/4")
60	1040-5	Regulator-Propane Gas (3/4")
61	6851-9	Manifold, Main (3/4")
62	1099-5	Manifold, Lower (1/2")
63	4433-4	Guide, Gear Rack
64	3578-5	Trunnion, Upper Door
65	3575-0	Trunnion, Lower Door
66	1904-6	Spacer, Door (1/2")
67	3596-3	Gear Rack, Left (Left gear racks for ovens prior to 1963-P/N 3610-2)
68	3611-0	Gear Rack, Right (Right Gear Racks for Ovens Prior to 1974-Consult with Factory for Correct Number and Style.)
69	3408-8	Yoke with Guide Pin
70	2024-9	Spring, Door Assembly
71	3411-8	Replacement Yoke Pin Guide
72	3597-1	Spacer, Upper Trunnion
73	4411-3	Firebox Panel SS
74	3412-6	Pin, Yoke
75	3413-4	Bearing with Bolt and Nut
76	6015-1	Panel, Right Gear Cover
77	4581-0	Panel, Left Gear Cover
78	1408-7	Light Socket
79	8584-7	Terminal Block
80	1119-3	Bushing, 3/8" x 1/2" NPT
81	1229-7	Tube, Safety Valve to Pilot
82	1225-4	Tube, Manifold to Safety Valve
83	1226-2	Tube, Manifold to Pressure Switch
84	4348-6	Upper Door with Window
85	3606-4	Lower Door with Window
86	3488-6	Keeper, Door Bearing
87	1524-5	Oven Bottom, Porcelain
88	6949-3	Pilot Shield

MONTAGUE

Vectaire Gas Convection Ovens (Horizontal Door)

Legend Gas Pizza Ovens

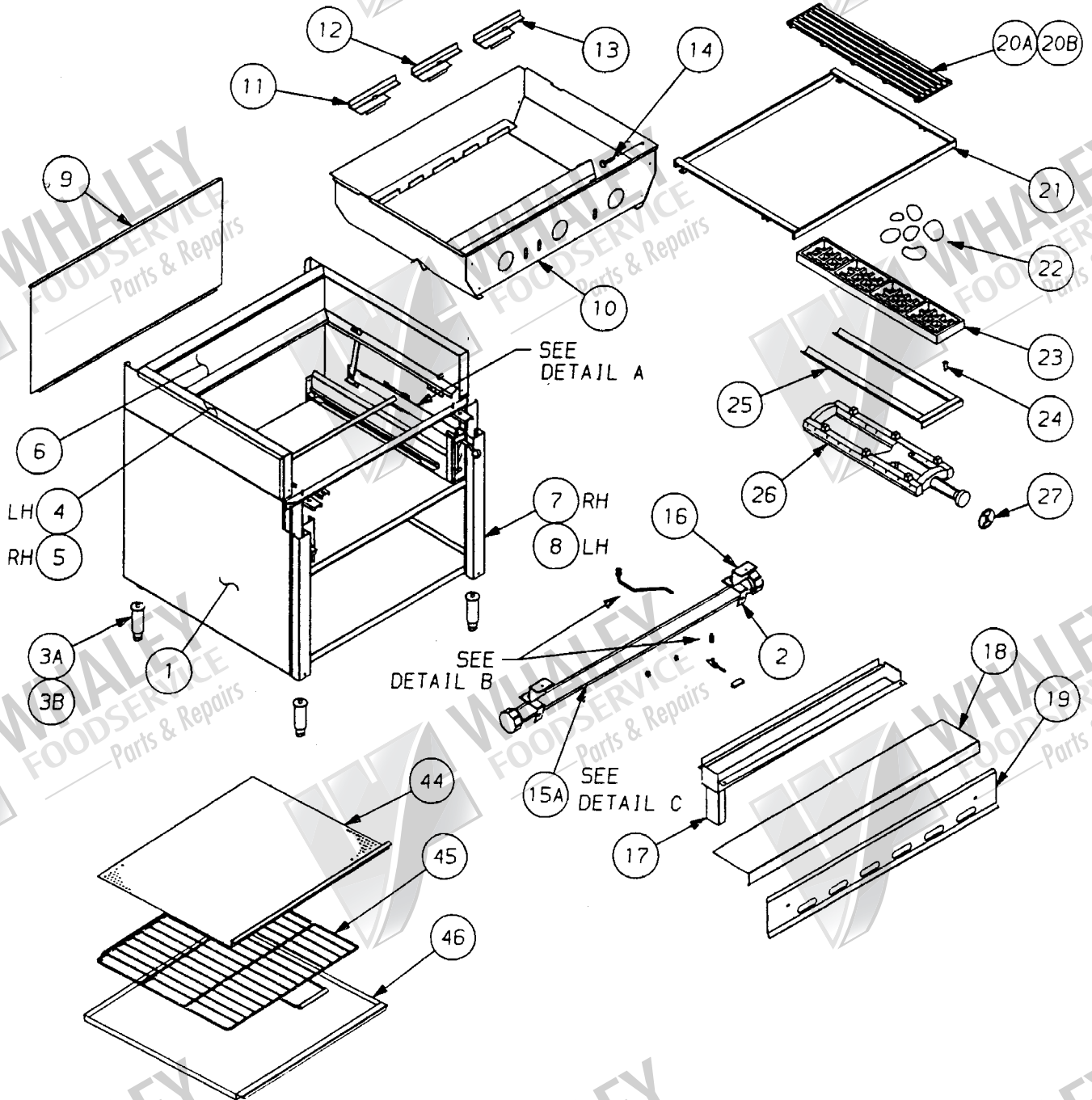
13P-1, 14P-1, 15P-1
23P-2, 24P-2, 25P-2



ITEM NO.	PART NO.	DESCRIPTION
2	02004-4	Handle, Oven Valve
3	01183-5	Union-3/8" NPT x 3/8" NPT
4	01149-5	Nipple-3/8" x 1-1/2"
5	01492-3	Tubing; Manifold to Safety-1/4" x 18"
6	03501-7	Thermostat, FDTH (650° F)
7	01976-3	Dial, Thermostat
8	01150-9	Nipple-3/8" x 2"
9	01025-1	Safety Valve
10	01036-7	Thermocouple
	27876-9	Thermocouple (15P-1)
11	01047-2	Pilot Burner, Nat. Gas
11	03405-3	Pilot Burner, LP Gas
12	02155-5	Orifice, Pilot, Nat. Gas
12	01048-0	Orifice, Pilot, LP Gas
13	22818-4	Valve, Pilot-1/8" NPTM x 1/4" CC
14	01176-2	Tee, Pipe-1/8" x 1/8" x 1/8"
15	01225-4	Tubing, Left Pilot-1/4" x 12"
16	01491-5	Tubing, Right Pilot-1/4" x 3"
17	05991-9	Tubing, Safety to Pilot-1/4" x 39-1/2" (13P-1)
17	04410-5	Tubing, Safety to Pilot-1/4" x 36"
18	01102-9	Manifold, Lower-3/4" (13P-1 & 14P-1)
	28234-0	Manifold, Lower-3/4" (15P-1)
19	24584-4	Cover Plate, Burner Box (14P & 15P)
19	24585-2	Cover Plate, Burner Box (13P)
20	11885-0	Panel; Right Front SS
20	11887-7	Panel; Right Front-PTD
21	11884-2	Panel; Left Front SS
21	11886-9	Panel; Left Front-PTD
22	06477-7	Chain, Burner Door
23	24587-9	Door, Burner Compartment-14P-1 (EG)
23	24588-7	Door, Burner Compartment-14P-1 SS
23	24589-5	Door, Burner Compartment-13P-1 (EG)
23	24590-9	Door, Burner Compartment-13P-1 SS
24	02027-3	Handle, Burner Compartment Door
25	19804-8	"Montague"-Chef
26	28201-4	Door, Oven-15P-1 SS
26	24606-9	Door, Oven-14P-1 (EG)
26	24607-7	Door, Oven-14P-1 SS
26	24605-0	Door, Oven-13P-1 (EG)
26	24604-2	Door, Oven-13P-1 SS
27	03175-5	Handle, Oven Door
28	04605-1	Cover, Firebox-13P-1
28	04604-3	Cover, Firebox-14P-1
28	28184-0	Cover, Firebox-15P-1
29	01275-0	Elbow, Street-1/8" NPT
30	01049-9	Orifice, Main Burner & Fitting (Nat. Gas)
30	01050-2	Orifice, Main Burner & Fitting (LP Gas)
31	03345-6	Burner, Oven-Complete
32	02037-0	Air Mixer
33	09518-4	Baffle, Oven Burner
34	01274-2	Elbow-3/8" NPT x 1/4" Tube (Old Style)
34	01288-2	Connector, Male 1/8" NPTM x 1/4" Tube (New Style)
35	01175-4	Tee, Reducing-3/4" x 3/8" x 3/8"
36	06383-5	Manifold, Gas Supply, 3/4" Rear (14P-1 & 15P-1)
36	06384-3	Manifold, Gas Supply, 3/4" Rear (13P-1)
37	28242-1	Insulation Pad (15P-1)
37	04403-2	Insulation Pad (14P-1)
37	04404-0	Insulation Pad (13P-1)

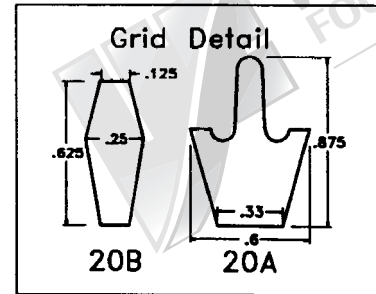
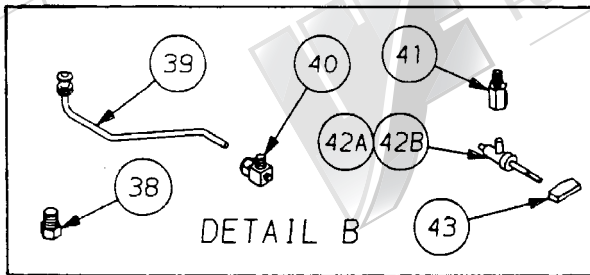
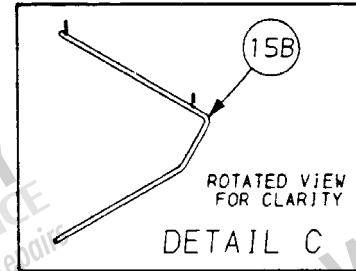
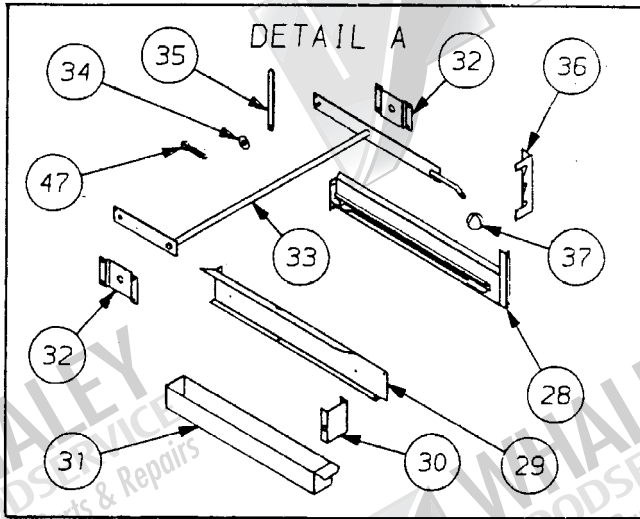
ITEM NO.	PART NO.	DESCRIPTION
38	28189-1	Deflector, Removable (15P-1)
38	03535-1	Deflector, Removable (14P-1)
38	03534-3	Deflector, Removable (13P-1)
40	04428-8	Channel, Deck Support (13P-1)
42	28279-0	Cordierite Deck-15P-1 (3 Required)
42	24571-2	Cordierite Deck-14P-1 (2 Required)
42	24572-0	Cordierite Deck-13P-1 (2 Required)
45	01763-9	Tile, Side 7-1/2" x 10-1/2"
46	04476-8	Cover, Tile-Right 14P-1
46	04455-5	Cover, Tile-Left 14P-1
	04482-2	Cover, Tile-Center 14P-1
	28178-6	Cover, Tile-Center 15P-1
47	07181-1	Cover, Tile-Right 13P-1
47	07180-3	Cover, Tile-Left 13P-1
	07755-0	Cover, Tile-Center 13P-1
48	01942-9	Clip, Thermal Bulb
55	28164-6	Deflector, Top (15P-1)
55	24634-4	Deflector, Top (14P-1)
55	24636-0	Deflector, Top (13P-1)
56	01762-0	Tile, Top (1-1/4" x 10-1/2" x 10-1/2")
57	03432-0	Pin, Door
58	06474-2	Spacer, Door
59	04311-7	Trunnion, Door-Complete (Right)
60	04312-5	Trunnion, Door-Complete (Left)
62	28252-9	Top Cover (Lower) 15P-1
62	24105-9	Top Cover (Lower) 14P-1
62	24651-4	Top Cover (Lower) 13P-1
63	28253-7	Trim Strip-Double Deck (15P-1) SS
63	24622-0	Trim Strip-Double Deck (14P-1) EG
63	24623-9	Trim Strip-Double Deck (14P-1) SS
63	24621-2	Trim Strip-Double Deck (13P-1) EG
63	24620-4	Trim Strip-Double Deck (13P-1) SS
64	28213-8	Panel, Upper Trim (15P-1) SS
64	24639-5	Panel, Upper Trim (14P-1) EG
64	24638-7	Panel, Upper Trim (14P-1) SS
64	24640-9	Panel, Upper Trim (13P-1) EG
64	24641-7	Panel, Upper Trim (13P-1) SS
65	28210-3	Panel, Top (15P-1)
65	23912-7	Panel, Top (14P-1)
65	23913-5	Panel, Top (13P-1)
69	01039-1	Regulator, Pressure Nat. Gas-3/4"
69	01040-5	Regulator, Pressure LP Gas-3/4"
73	01969-0	Hinge, Burner Box Door (Right)
73	01971-2	Hinge, Burner Box Door (Left)
74	01811-2	Rating Plate (Old Style)
74	24717-0	Rating Plate w/AGA Seal CGA
	04546-2	Leg-12" Painted
	10183-4	Leg-15" Painted
	04631-0	Flue Deflector, PTD
	04629-9	Flue Deflector,
	03119-4	Downdraft Diverter, PTD
	03132-1	Downdraft Diverter, SS
75	24658-1	Pilot, Tube
76	24775-8	Orifice, Spud (Nat)
76	24776-6	Orifice, Spud (LP)
77	24292-6	Pilot Tube Support
78	01136-3	Elbow-Street, Pipe

Legend Underfired Gas Broilers



Underfired Broilers, Ceramic Style

ITEM NO.	DESCRIPTION	24	30	36
1	Cabinet Base	20355-6	20402-1	13588-7
2	Valve, Bracket	06137-9	06137-9	06137-9
3A	Leg w/Foot – SS	03467-3	03467-3	03467-3
3B	Leg w/Foot – PTD	03468-1	03468-1	03468-1
4	Top Trim Assembly – Left	19413-1	19413-1	19413-1
5	Top Trim Assembly – Right	19412-3	19412-3	19412-3
6	Top Trim Rear – SS	20371-8	20422-6	19490-3
7	Trim Mullion – Right	19878-1	19878-1	19878-1
8	Trim Mullion – Left	19881-1	19881-1	19881-1
9	Back-Outer Panel	20349-1	20-397-1	20318-1
10	Burner Box Assembly	20226-6	20452-8	19406-9
11	Support Grate–Rear/Left		20435-8	19992-3
12	Support Grate–Rear/Mid	19408-5		19408-5
13	Support Grate–Rear/Right		20433-1	19993-1
14	Screw Cap w/Shank	19847-1	19847-1	19847-1
15A	Manifold	20239-8	20430-7	20006-9
15B	Manifold w/Rear Conn	20012-3	20012-3	20012-3
16	Support Bracket	19839-0	19839-0	19839-0
17	Broiler Trough	20243-6	20374-2	19858-7
18	Guard Rail Assembly	20248-7	20363-7	20010-7
19	Control Panel	20232-0	20428-5	20070-0
20A	Top Grid (Ultra Flow)	19692-4	19692-4	19692-4
20B	Top Grid	09347-5	09347-5	09347-5
21	Grid Frame Assembly	20258-4	20347-5	19853-8
22	Char-Rock	02073-7	02073-7	02073-7
23	Grate, Bottom	09346-7	09346-7	09346-7
24	Screw, Drive	06997-3	06997-3	06997-3
25	Burner Shield	19868-4	19868-4	19868-4
26	Burner	19609-6	19609-6	19609-6
27	Air Mixer	02038-9	02038-9	02038-9
28	Liner, Warming Shelf-Right	19728-9	19728-9	19728-9
29	Liner, Warming Shelf-Left	19735-1	19735-1	19735-1
30	Bracket, MTG	19738-6	19738-6	19738-6
31	Grease Container	19752-1	19752-1	19752-1
32	Lever MTG Bracket (X2)	19366-6	19366-6	19366-6
33	Lever Assembly Grate	20234-7	20411-0	19363-1
34	Washer, Flat	01924-0	01924-0	01924-0
35	Vertical Link	19374-7	19374-7	19374-7



Underfired Broilers, Ceramic Style (cont.)

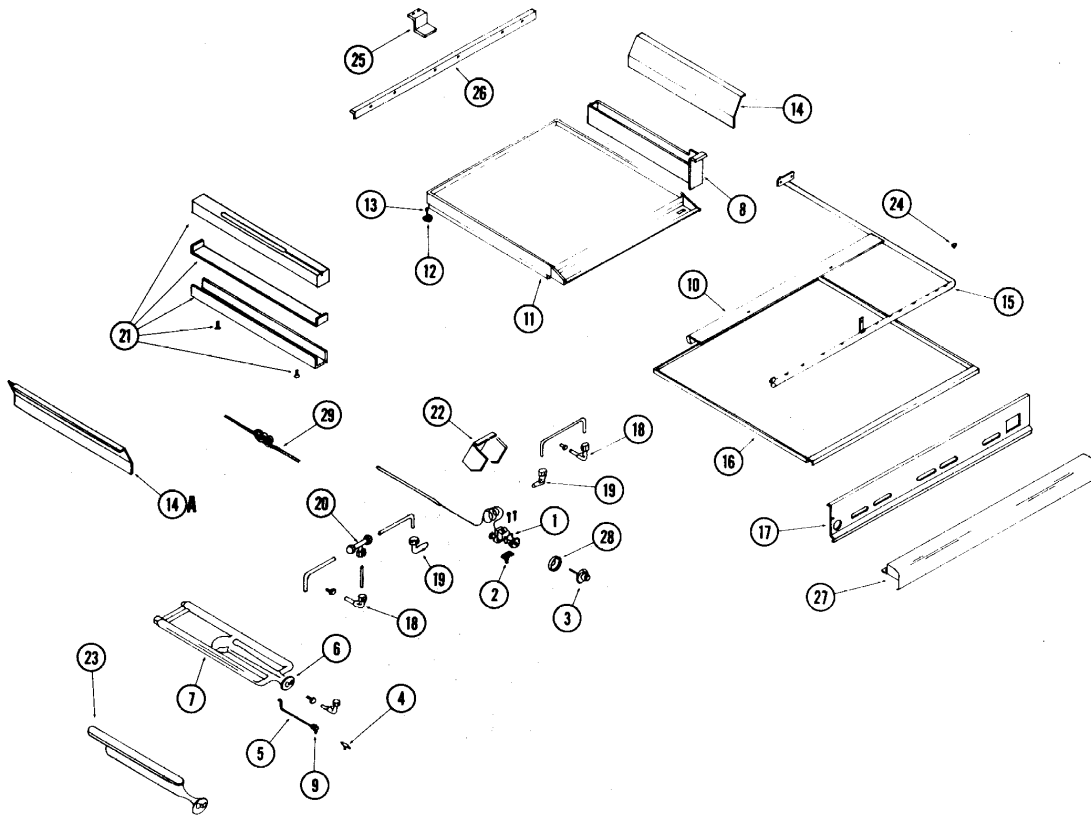
ITEM NO.	DESCRIPTION	24	30	36
36	Bracket, Grid Adjustment	19726-2	19726-2	19726-2
37	Knob, Red Ball	02033-8	02033-8	02033-8
38	Plug (BR) Pipe	01279-3	01279-3	02179-3
39	Pilot Light	20323-8	20323-8	20323-8
40	Pilot Valve	01055-3	01055-3	01055-3
41	Adapter Pipe	20082-4	20082-4	20082-4
42A	Valve Assembly, Burner (N)	04328-1	04328-1	04328-1
42B	Valve Assembly, Burner (LP)	02406-6	02406-6	02406-6
43	Valve Handle	02002-8	02002-8	02002-8
44	Screen, Debris	20564-8	20582-6	20585-0
45	Wire Rack w/Handle	20260-6	20259-2	19759-9
46	Drip Container w/SS Trim	20253-3	20379-3	19747-5
47	Coller Pin	01931-3	01931-3	01931-3
	Pressure Regulator–Nat.	01039-4	01039-4	01039-4
	Pressure Regulator–Prop.	01040-5	01040-5	01040-5
	Pressure Regulator (Dbl.)–Nat.	02145-8	02145-8	02145-8
	Pressure Regulator (Dbl.)–Prop.	02146-6	02146-6	02146-6

G
GC
GM

Grizzly Gas Fired Restaurant Ranges

MONTAGUE

Grizzly Gas Fired Restaurant Ranges

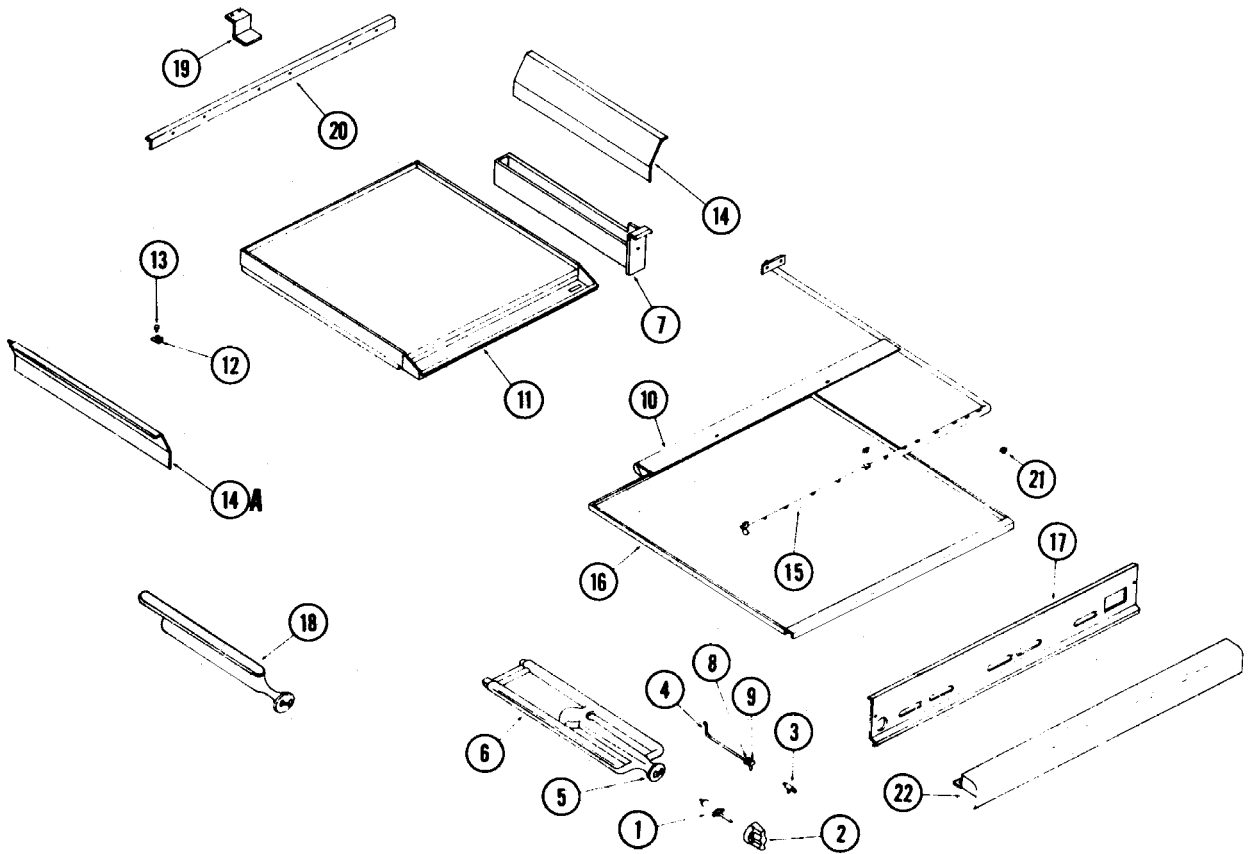


Fry Top Section, Thermostat Control

ITEM NO.	PART NO.	DESCRIPTION
1	3384-7	Thermostat, BJWA
2	2336-1	Nipple, Flange Mount
3	1982-8	Dial, Thermostat
4	1055-3	Valve, Pilot Adjustment
5	3415-0	Lighter, Pilot
6	2038-9	Air Mixer
7	3447-9	Burner Assembly
8	14127-5	Grease Container, Fry Top
9	2202-0	Nut, Compression-3/16"
	2203-9	Sleeve, Compression-3/16"
10	11875-3	Shield, Front Valve-34" Unit
11	15982-4	Fry Top-1'
	15988-3	Fry Top-2'
	15981-6	Fry Top-3'
	15983-2	Fry Top-4'
	15984-0	Fry Top-5'
	15985-9	Fry Top-6'
12	1920-8	Nut, Retainer

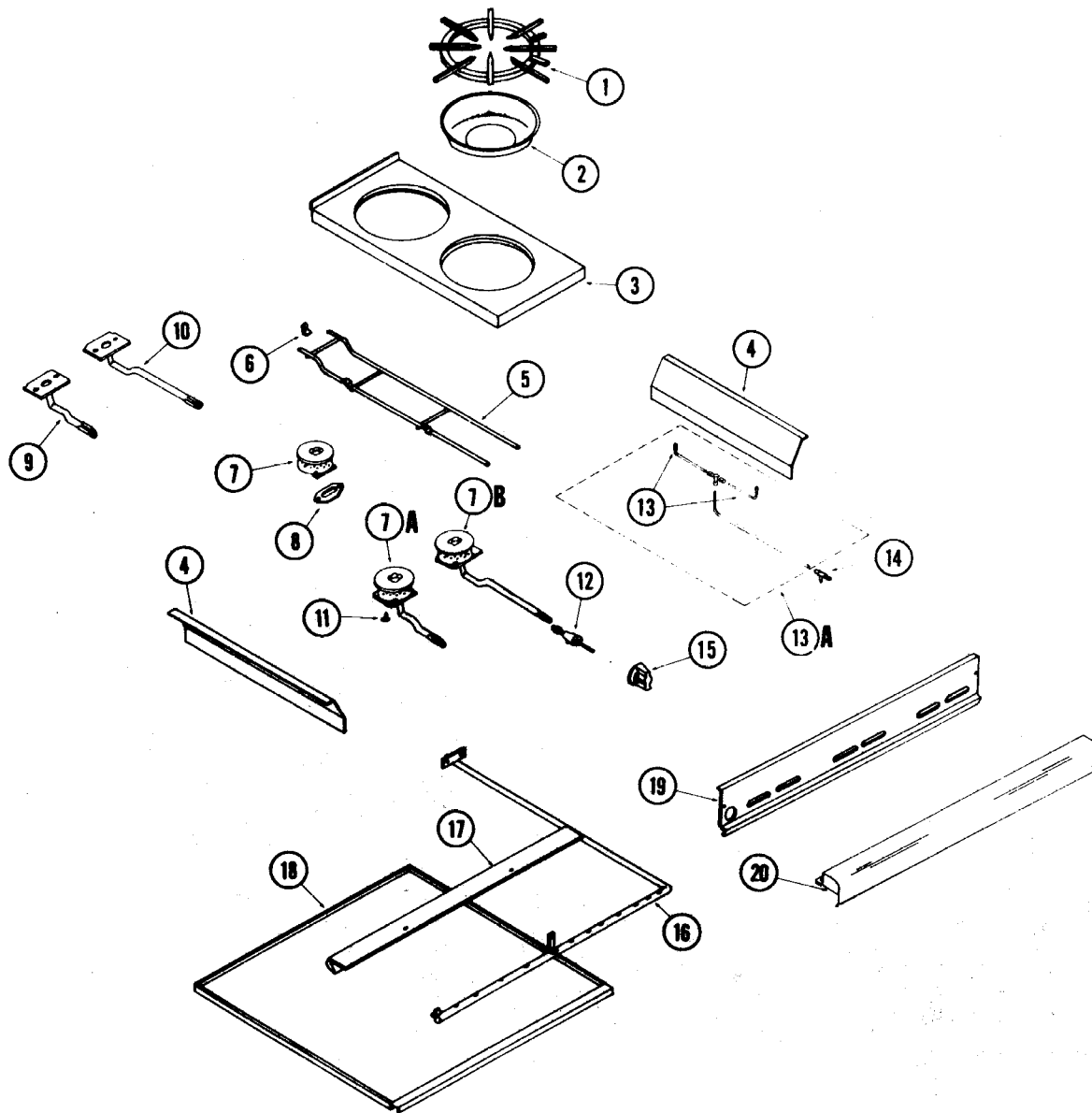
ITEM NO.	PART NO.	DESCRIPTION
13	1864-4	Bolt, Adjusting-Fry Top
14	14043-0	Deflector, Drip-Right
14A	14039-2	Deflector, Drip-Left
15	17441-6	Manifold Assembly-34" Unit
16	4485-7	Container, Drip-Pan
17	14126-7	Panel, Control
18	2411-2	Orifice, Elbow Assembly-Nat. (4.0"WC)
	14612-9	Orifice, Elbow Assembly-Nat. (60"WC)
	3385-5	Orifice, Elbow Assembly-LP
19	1285-8	Elbow, Male-1/4" x 3/8"CC
20	1286-6	Tee, Tubing-3/8"CC
21	3386-3	Holder Assembly, Sensing Bulb
22	8569-3	Shield, Thermostat
23	3361-8	Burner Assembly-1' Only
24	1279-3	Plug, Manifold-1/8"
25	14146-1	Support, Burner-Rear
26	14042-2	Angle, Rear Structural-34" Unit
27	11787-0	Rail, Front Guard-34" Unit
28	1985-2	Bezel, Thermostat
29	7125-0	Insulation Sleeving, Thermostat Bulb





Fry Top Section, Manual Control

ITEM NO.	PART NO.	DESCRIPTION	ITEM NO.	PART NO.	DESCRIPTION
				14111-9	Fry Top-3'
				14119-4	Fry Top-4'
				14120-8	Fry Top-5'
				14114-3	Fry Top-6'
			12	1920-8	Nut, Retainer
			13	1869-4	Bolt, Adjusting-Fry Top
			14	14043-0	Deflector, Drip-Right
			14A	14039-2	Deflector, Drip-Left
			15	14027-9	Manifold Assembly-34" Unit
			16	4485-7	Container, Drip-Pan
			17	14126-7	Panel, Control
			18	3361-8	Burner Assembly, Complete-1' Only
			19	14146-1	Support, Burner-Rear
			20	14042-2	Angle, Rear Structural-34" Unit
			21	1279-3	Plug, Manifold-1/8"
			22	11787-0	Rail, Front Guard-34" Unit
1	2403-1	Valve, Top Burner-Nat. (4.0"WC)			
	1006-5	Valve, Top Burner-LP (10.0"WC)			
	14608-0	Valve, Top Burner-Nat. (6.0"WC)			
2	11790-0	Handle, Valve-Blue			
3	1055-3	Valve, Pilot Adjustment			
4	3415-0	Lighter, Pilot			
5	2038-9	Air Mixer			
6	3447-9	Burner Assembly-"H" Style			
7	14127-5	Grease Container, Fry Top			
8	2202-0	Nut, Compression-3/16"			
9	2203-9	Sleeve, Compression-3/16"			
10	11875-3	Shield, Front Valve-34" Unit			
11	14123-2	Fry Top-1'			
	14122-4	Fry Top-2'			

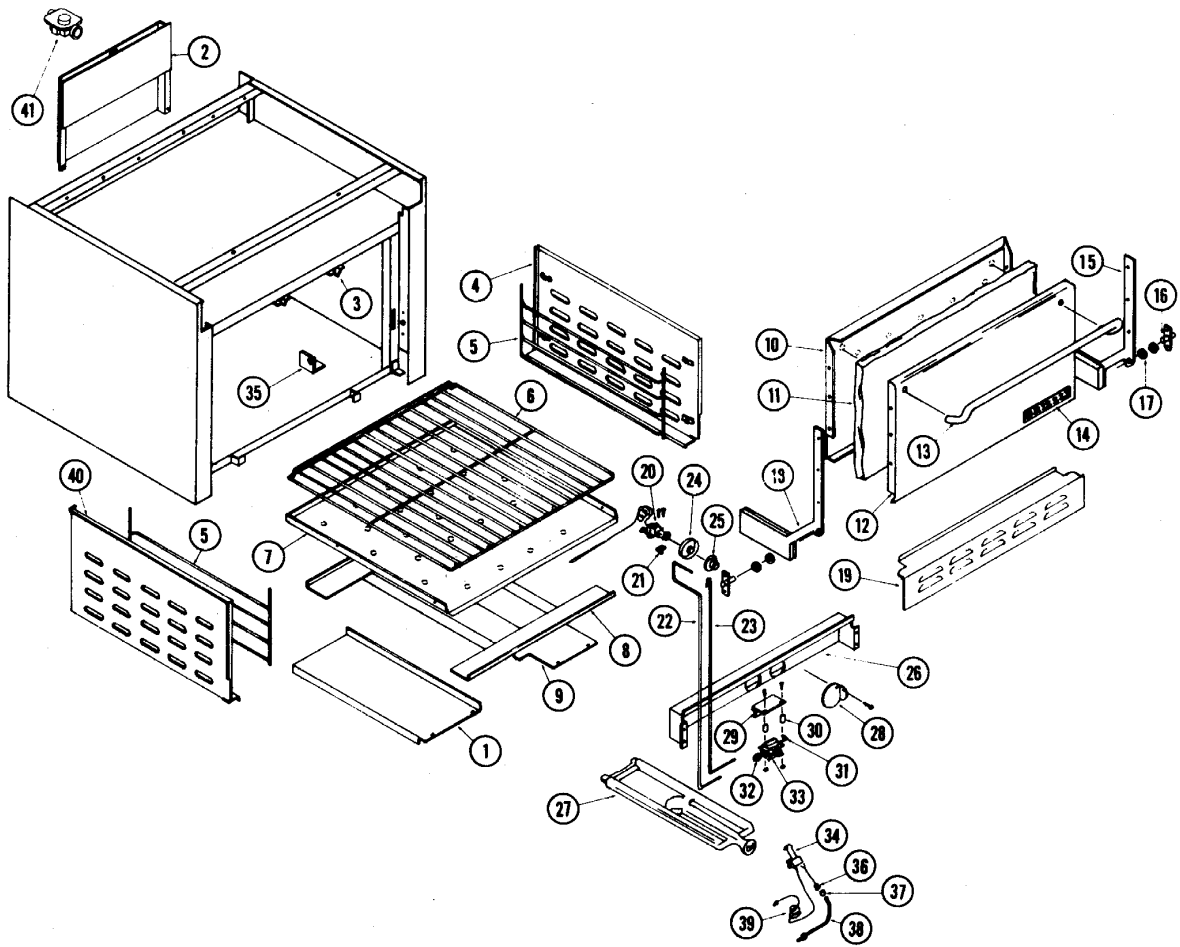


Open Top Section

ITEM NO.	PART NO.	DESCRIPTION
1	11758-7	Grate, Top
2	1551-2	Bowl, Burner
3	11834-6	Open Top Section-2 Hole
4	14040-6	Deflector, Drip
5	11873-7	Support, Burner
6	1388-9	Clamp, Burner Support
7	3371-5	Burner, Head-Round
7A	15589-6	Burner, Front-Complete
7B	15591-8	Burner, Rear-Complete
8	2115-6	Gasket, Burner
9	11778-1	Venturi-Front Burner
10	11777-3	Venturi-Rear Burner

ITEM NO.	PART NO.	DESCRIPTION
11	6976-0	Screw, Cap-Burner
12	2403-1	Valve, Top Burner-Nat. (4.0" WC)
	1006-5	Valve, Top Burner-LP (10.0" WC)
	14608-0	Valve, Top Burner-Nat. (6.0" WC)
13	14051-1	Lighter, Pilot
13A	14033-3	Pilot Kit, Open Top-(Less Valve)
14	1055-3	Valve, Pilot Adjustment
15	11790-0	Handle, Valve-Blue
16	14027-9	Manifold Assembly-34" Unit
17	11875-3	Shield, Front Valve-34" Unit
18	4485-7	Container, Drip-34" Unit
19	14062-7	Panel, Control-34" Unit
20	11787-0	Rail, Front Guard-34" Unit





Grizzly G26 Oven

ITEM NO.	PART NO.	DESCRIPTION
1	14017-1	Baffle, Air-Left
2	6075-5	Riser, Flu
3	1942-9	Clip, Thermostat Bulb (2 qty.)
4	11609-2	Liner, Right Side-Interior
5	7223-0	Guide, Rack-Right/Left (2 qty.)
6	9005-0	Rack, Oven
7	11602-5	Liner, Bottom-Oven
8	3572-6	Baffle, Flame
9	14019-8	Baffle, Air-Right
10	11794-3	Liner, Oven Door
11	1424-9	Insulation, Door
12	17440-8	Panel, Door-Ptd, w/Nameplate
13	11776-5	Handle, Door
14	14064-3	Name Plate
15	6077-1	Trunnion, Door-Right
16	3390-1	Pin, Door (2 qty.)
17	11350-6	Washer, Door Spacer (4 qty.)
18	6079-8	Trunnion, Door-Left
19	14076-7	Panel, Firebox-Ptd., 34" Unit
20	11810-9	Thermostat, Oven-BJWA
21	2346-9	Nipple, Flange Mount
22	15910-7	Tubing, Al-Thermostat to S.V., 3/8"
23	1231-9	Tubing, Al-Man. to S.V., 1/4"

ITEM NO.	PART NO.	DESCRIPTION
24	1985-2	Bezel, Thermostat
25	1984-4	Dial, Thermostat
26	11853-2	Burner Box-Front Assembly
27	3447-9	Burner Assembly
28	17439-4	Door, Pilot Access-Ptd.
29	11786-2	Bracket, Safety Valve Mtg
30	11811-7	Spacer, Safety Valve Mtg
31	2409-0	Orifice, Elbow Assembly-Nat.(4.0" WC)
	14609-9	Orifice, Elbow Assembly-Nat.(6.0" WC)
	1064-2	Orifice, Elbow Assembly-LP
32	1282-3	Connector, Male-3/8" CC
33	1065-0	Valve, Pilot Safety
34	11809-5	Pilot, Oven-Natural
	14061-9	Pilot, Oven-LP
35	6065-8	Bracket, Pilot Mtg
36	2190-3	Pilot Orifice, Oven-Natural
	2191-1	Pilot Orifice, Oven-Propane
37	6155-7	Extension Nut-1/4" Tubing
38	1230-8	Tubing, Al-Safety to Pilot, 1/4"
39	1013-8	Thermocouple
40	11608-4	Liner, Left Side-Interior
41	1039-1	Regulator-Nat. (4.0"WC)
	14605-6	Regulator-Nat. (6.0"WC)
	1040-5	Regulator-LP