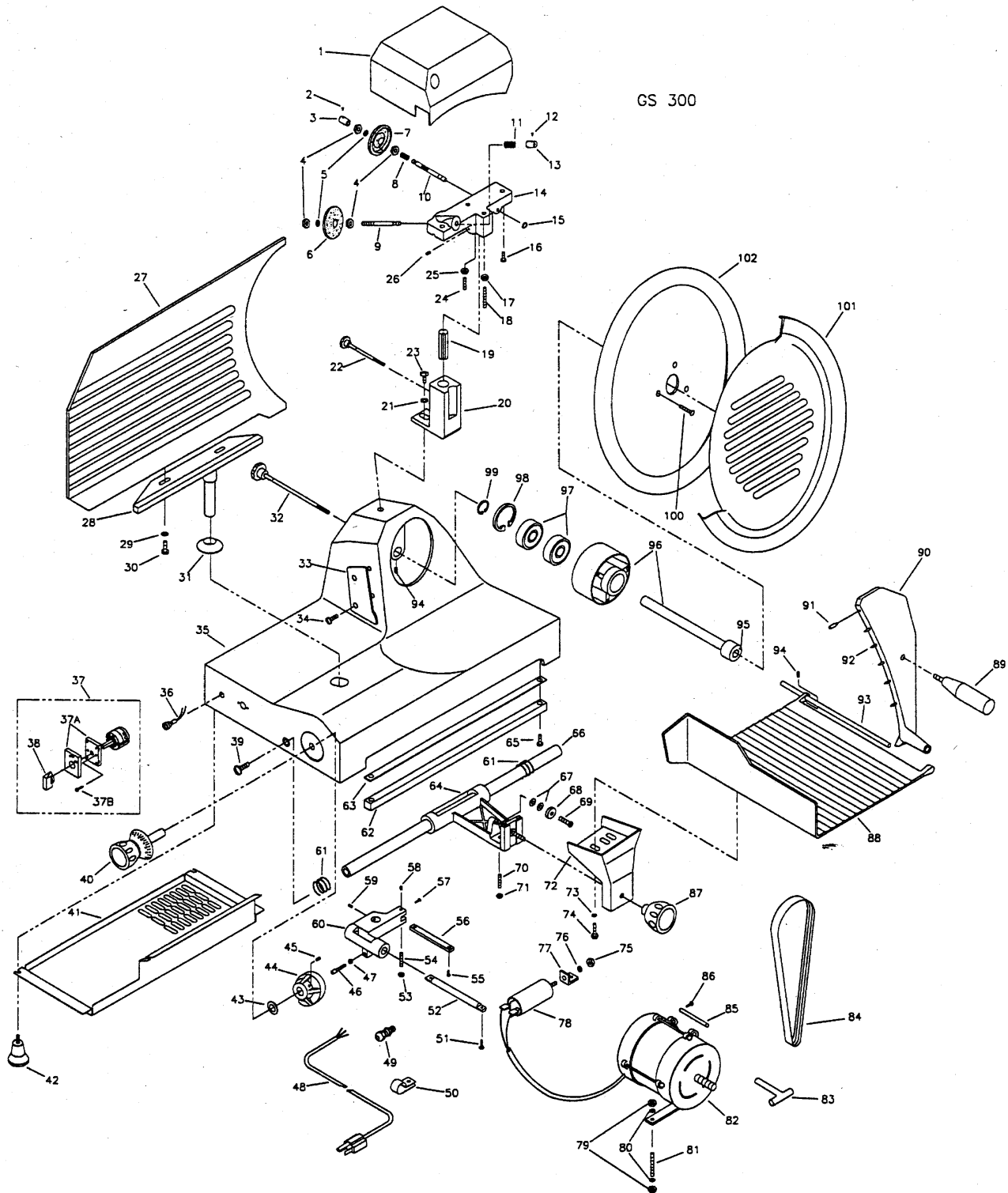


Model SM-12A Slicer



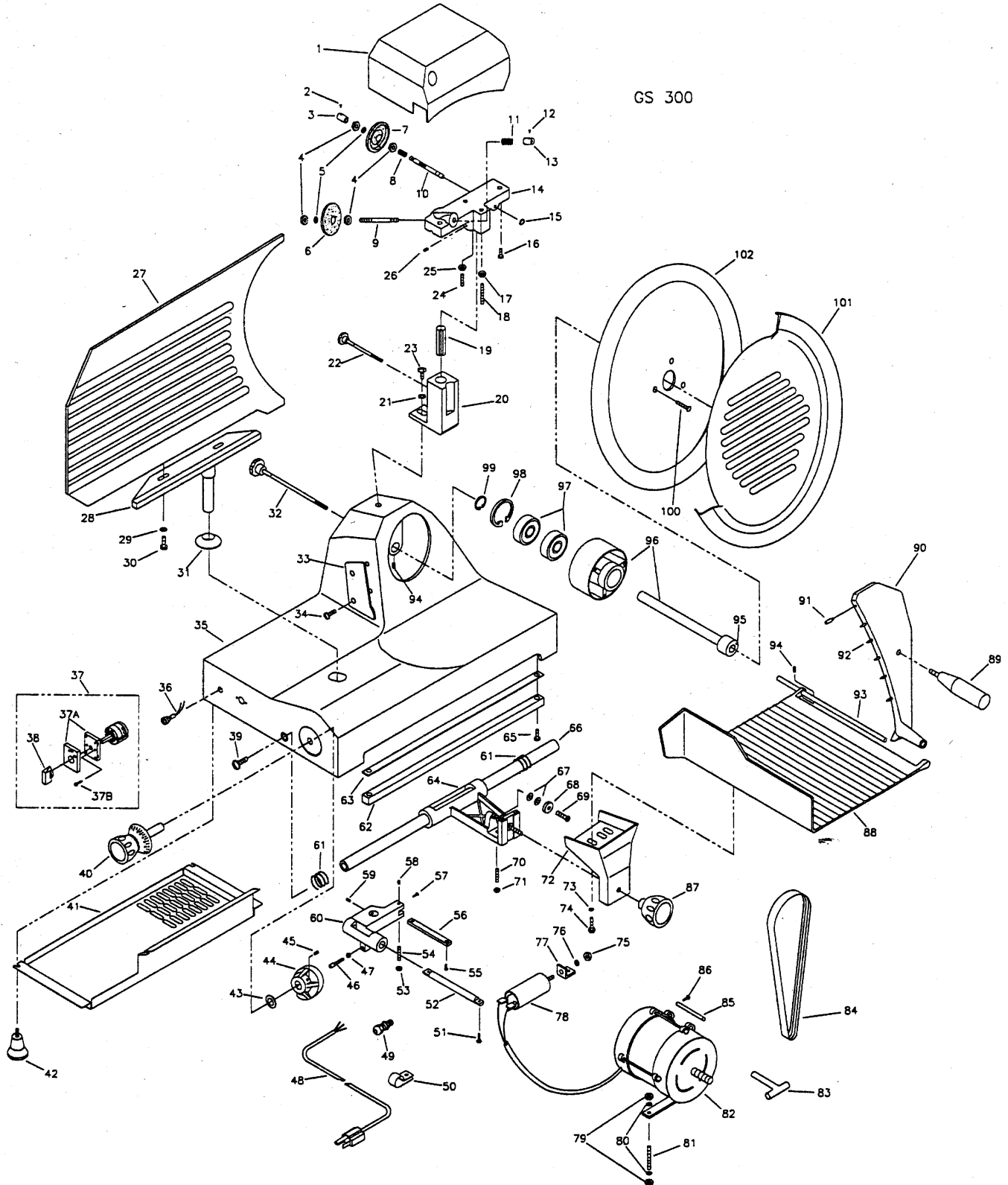
(Illustration on page 299.)

ITEM NO.	PART NO.	DESCRIPTION	ITEM NO.	PART NO.	DESCRIPTION
1	09-SM-1722	Button: Deburring Stone	32	08-SM-1220	Knife Pulley Assembly (3 qty.)
2	08-SM-6050	Nut: Stone Mounting	33	23-SM-1299	Knife Cover
3	06-SM-6051	Fiber Washer	34	08-SM-1427	Thumbscrew: Knife Cover
4	09-SM-1327	Deburring Stone (Gray)	35	08-SM-1441	Thumbscrew: Knife Wiper (2 qty.)
5	09-SM-1317	Shaft: Deburring Stone	36	09-SM-1284	Knife Wiper
6	08-SM-1323	Spring: Deburring Stone	37	08-SM-1514	Washer: Star 8-mm (2 qty.)
7	08-SM-6050	Nut: Stone Mounting	38	08-SM-1214	Screw: H x HD 8Ma x 30 (2 qty.)
8	06-SM-6051	Fiber Washer	39	23-SM-1345	Base
9	09-SM-1203	Stone: Sharpening Stone	40	09-SM-1253	Platform Rail
10	09-SM-1318	Shaft: Sharpening Stone	41	08-SM-1073	Screw: H x HD 5Ma x 10 (2 qty.)
11	08-SM-1322	Spring: Sharpening Stone	42	09-SM-1231	Regulator Knob
12	08-SM-1102	Washer: Flat 6-mm	43	08-SM-1232	Bushing: Regulator Knob
13	09-SM-1208	Knob: Sharpener Housing/Knife Cover	44	09-SM-1301	Regulator Cam: 30-mm
14	23-SM-1320	Sharpener Housing	45	08-SM-1091	Use P/N: 08-SM-479 (2 qty.)
	30-SM-1320	Sharpener Assembly Complete	46	30-SM-1228	Ratchet Pin Assembly
15	08-SM-1210	Screw: CSK HD 6Ma x 12	47	05-6-1503	Running Light: 115V
16	08-SM-1211	Nut: Tube Shaft	48	05-6-1501	Guard: Toggle Switch
17	08-SM-1336	Retaining Ring: Stone Shaft (2 qty.)	49	05-6-1501	Switch: Toggle: 120V
18	30-SM-1202	Sharpener Frame Assembly (Includes: 1-12, 16-18, 21 & 22)		05-6-1507	Switch: Toggle: 230V
19	08-SM-1204	Washer: Flat 4-mm (2 qty.)	49A	12-6-1779	Label: On/Off
20	08-SM-1012	Screw: PN HD 4Ma x 10 (2 qty.)	49B	12-6-2193	Boot: Toggle Switch
21	23-SM-1202	Tube Shaft, Nute & Frame (Includes: 16, 18, 21 & 22)	50	30-SM-1233	Bracket: Regulator Spring
22	30-SM-1207	Mounting Post Assembly: Sharpener	51	08-SM-1333	Screw: SK HD 6Ma x 10
22A	08-SM-1035	Screw: Set 8Ma x 8	52	08-SM-1234	Spring: Regulator
23	23-SM-1319	Regulator Plate	53	08-SM-1235	Screw: PN HD 6Ma x 10
24	09-SM-1208	Knob: Sharpener Housing/Knife Cover	55	08-SM-1267	Nut: Cam Follower
24A	09-SM-1223	Rod: Knife Cover	56	06-SM-1267	Cam Follower Pin
25	08-SM-1216	Nut: Hex 14M 1 x 6	57	01-SM-1237	Regulator Slice
26	08-SM-1217	Washer: Flat 14-mm x 1	58	08-SM-1236	Slide Bushing (2 qty.)
27	23-SM-1212	Knife Housing	59	09-SM-1363	Bracket: Regulator Slide (2 qty.)
28	08-SM-1218	Spacer: Knife Pulley, 2.3-mm	60	08-SM-1063	Nut: Jam Hex 6M (2 qty.)
	08-SM-1340	Spacer: Knife Pulley Shaft	61	08-SM-1054	Screw: HX HD 6Ma x 20
29	30-SM-1220	Knife Pulley Assembly (Includes: 28, 29, Bearing & Shaft)	62	08-SM-1333	Screw: SK HD 6Ma x 16 (4 qty.)
	09-SM-1219	Bearing	63	08-SM-1226	Washer: Flat 8-mm x 26 (2 qty.)
30	06-SM-1221	Belt: TB2-34-660	64	08-SM-1302	Washer: Lock Split 8-mm (2 qty.)
30	06-SM-1370	Belt: TB2-630 (Serial No.: 110598BD013 FWD)	65	08-SM-1227	Screw: HX HD 8Ma x 30 (2 qty.)
31	09-SM-1224	Knife: 12"	66	08-SM-1334	Bumper: Motor Adjusting Screw
	09-SM-1307	Knife: 12" SS	67	08-SM-1515	Nut: Hex 8Ma
			68	08-SM-1515	Nut: Hex 8Ma
			69	08-SM-1247	Screw: Belt Tension Adjuster
				08-SM-6090	Screw: Belt Tension (Serial No.: 110598BD013 FWD)

ITEM NO.	PART NO.	DESCRIPTION
70	30-SM-1246	Motor: 115V/60Hz
	30-SM-1230	Motor: 220V/50Hz
	30-SM-1372	Motor: 220V/50Hz (Serial No.: 110598BD013 FWD)
	09-MM-9541	Bearing: #6201 (2 qty.)
	05-SM-1367	Wire: Motor Ground
	08-SM-1235	Screw: PN HD 6Ma x 10 (3 qty.)
	05-SM-6125	Ground Tag (3 qty.)
	08-SM-6127	Washer: Star 5-mm (3 qty.)
	08-SM-6126	Screw: PN HD 5Ma x 8
71	08-SM-1364	Retaining Ring: Motor Mounting (2 qty.)
72	09-SM-1347	Bracket: Mounting Motor
72A	09-SM-9038	Plate: Motor Bracket Mounting (Serial No.: 110598BD013 FWD)
72B	08-SM-2048	Screw: SK HD 6Ma x 18 (Serial No.: 110598BD013 FWD) (2 qty.)
72C	08-SM-2047	Screw: SK HD 6Ma x 18 (Serial No.: 110598BD013 FWD) (2 qty.)
73	08-SM-1333	Screw: SK HD 6Ma x 16 (2 qty.)
74	08-SM-1365	Post: Motor Mounting
	08-SM-6100	Post: Motor Mounting (Serial No.: 110598BD013 FWD)
74A	08-SM-1514	Washer: Star 8-mm (Serial No.: 110598BD013 FWD)
74B	08-SM-1515	Nut: Hex 8Ma (Serial No.: 110598BD013 FWD)
75	05-SM-1245	Capacitor: 10MF, 450V
	05-SM-2052	Capacitor: 10MF, 450V (Serial No.: 110598BD013 FWD)
76	08-SM-1244	Clamp: Capacitor
77	08-SM-1117	Screw: St PN HD 3.9 x 10
78	05-SM-1506	Strain Relief
79	05-GSM-756	Cordset
80	08-SM-1117	Screw: ST PN HD 3.9 x 10 (4 qty.)
81	08-SM-1240	Wire Clamp (4 qty.)
82	09-SM-1329	Bottom Cover
83	06-SM-1463	Foot: 45-mm H W/6Ma Stud (4 qty.)
84	30-SM-1359	Spike Plate Assembly (Includes: 84, 90, 91)
85	30-SM-1289	Foodpusher Assembly (Includes: 84-91)
86	08-SM-1362	Screw: Foodpusher Storage
87	08-SM-1016	Nut: Jam Hex 6Ma

ITEM NO.	PART NO.	DESCRIPTION
88	08-SM-1264	Screw: Set 10Ma x 30
89	30-SM-1265	Handle Assembly With Stud
90	06-SM-1360	Nylon Washer: Foodpusher
91	09-SM-1490	Knob: SM With 6-mm Female Thread
92	09-2M-1269	Shaft: Foodpusher
93	09-SM-1283	Lock Knob: Shaft
94	23-SM-1270	Platform
95	23-SM-1273	Platform Bracket
96	09-SM-1272	Handle: Platform
	09-SM-9039	Handle: Platform (Serial No.: 092900BD001 FD)
96A	09-SM-9049	Cap Cover (Serial No.: 092900DB001 FWD)
97	09-SM-1274	Knob: Platform
98	08-SM-1271	Screw: HX HD 5Ma x 15 (2 qty.)
	08-SM-2049	Screw: SK HD 5Ma x 30 (Serial No.: 092900DB002 FWD) (2 qty.)
98A	08-SM-1077	Nut: Hex 5Ma (Serial No.: 092900DB001 FWD) (2 qty.)
99	08-SM-1102	Washer: Flat 6-mm (2 qty.)
100	08-SM-1080	Nut: Hex 6-mm
101	08-SM-1282	Screw: HX HD 6Ma x 25
102	06-SM-1540	Roller: Platform
103	08-SM-1102	Washer: Flat 6-mm
104	09-SM-1275	Roller: Bracket
105	08-SM-1278	Screw: Round Head (Roller Bracket) SS (2 qty.)
106	08-SM-1226	Washer: Flat 8-mm x 26 (2 qty.)
107	08-SM-1514	Washer: Star 8-mm (2 qty.)
108	08-SM-1261	Screw: CSK HD 8Ma x 15 (2 qty.)
109	08-SM-1260	Washer: Shaft (2 qty.)
110	09-SM-1252	Shaft Extension
111	06-SM-1259	Washer: Rubber (2 qty.)
112	08-SM-1337	Washer: Platform Shaft (2 qty.)
113	08-SM-1258	Bumper: Spring Shaft (2 qty.)
114	09-SM-1254	Platform Shaft
115	01-SM-1255	Platform Carriage
116	08-SM-1251	Stud: Platform Bracket 10-mm x 38
117	08-SM-1256	Screw: HX HD 6Ma x 20 Nylon
118	08-SM-1257	Screw: Set (Carriage)
119	06-SM-1346	Washer: Rubber
120	08-SM-1303	Screw: Platform Bracket (2 qty.)

Model GS Series Slicer



GS300 Slicer

ITEM NO.	PART NO.	DESCRIPTION
1	23-SM-1843	Sharpener Housing
	30-SM-1842	Knife Sharpener Assembly (Includes: 1-19 & 24-26)
2	08-SM-1854	Screw: CSK HD 2.5Ma x 4
3	09-SM-2003	Button: Deburring Stone
4	08-SM-1858	Nut: Hex 6Ma (4 qty.)
5	08-SM-1859	Washer: Flat 6-mm (2 qty.)
6	09-SM-1864	Stone: Sharpening
7	09-SM-1865	Stone: Deburring
8	08-SM-1855	Spring: Stone
9	09-SM-1856	Shaft: Sharpening Stone
10	09-SM-2002	Shaft: Deburring Stone
11	08-SM-1855	Spring: Stone
12	08-SM-1854	Screw: CSK HD 2.5Ma x 4
13	09-SM-1853	Button: Sharpening Stone
14	01-SM-1882	Sharpener Frame
	30-SM-1882	Sharpener Frame Assembly (Includes: 2-15, 17-19 & 24-26)
15	08-SM-1021	Retaining Ring: 6-mm
16	08-SM-429	Screw: PN HD 5Ma x 16 (2 qty.)
17	08-SM-831	Nut: Jam Hex 5Ma
18	08-SM-1862	Stud With Nut: 5Ma x 50
19	09-SM-1840	Post: Sharpener Mounting
20	23-SM-1839	Sharpener Bracket
21	06-SM-1010	Washer: Flat 8-mm
22	09-SM-1841	Knob: Knife Sharpener
23	08-SM-1804	Screw: HX HD 8Ma x 20
24	08-SM-1861	Stud With Nut: 5Ma x 35
25	08-SM-831	Nut: Jam Hex 5Ma
26	08-SM-479	Screw: Set 5Ma x 5
27	23-SM-1803	Regulator Plate
28	23-SM-1802	Support: Regulator Plate
29	08-SM-1010	Washer: Flat 8-mm (2 qty.)
30	08-SM-1214	Screw: HX HD 8Ma x 30 (2 qty.)
31	06-SM-1895	Boot: Regulator Support Bracket
32	09-SM-1852	Knob & Rod Assembly: Knife Cover
33	04-SM-1820	Knife Wiper (GS300)
34	08-SM-1948	Screw: Knife Wiper (2 qty.)
	08-SM-1819	Thumbscrew: Knife Wiper (2 qty.)

ITEM NO.	PART NO.	DESCRIPTION
35	23-SM-1801	Base
36	05-SM-1951	Pilot Light: 120V
37	05-SM-1877	Switch Assembly, Rotary: 115/220V
37A	09-SM-1875	Legend Plate: Rotary Switch
37B	09-SM-1876	Screw: Rotary Switch Mounting (2 qty.)
38	09-SM-1874	Knob: Rotary Switch
39	08-SM-1807	Screw: Carriage Shaft
40	09-SM-1808	Knob: Regulator
41	09-SM-1349	Bottom Cover
42	06-SM-1806	Foot: 35-mm H With 8Ma Stud (4 qty.)
43	09-SM-1812	Washer: Wave 18-mm
44	09-SM-1811	Regulator Cam
45	08-SM-1879	Screw: Set 5Ma x 10
46	08-SM-1813	Cam Follower
47	08-SM-1885	Nut: Jam Hex 8Ma
48	05-GSM-756	Cordset
49	05-SM-1894	Bushing: Strain Relief PG11
50	05-SM-2008	Clamp, Cable: Nylon 3/8"
51	08-SM-1890	Screw: HX HD 6Ma x 20, Black Ox (2 qty.)
52	09-SM-1815	Shaft: Regulator Bracket
53	08-SM-831	Nut: Jam Hex. 5Ma
54	08-SM-1861	Stud With Nut: 5Ma x 35
55	08-SM-1220	Screw: PN HD 5Ma x 10 (2 qty.)
56	09-SM-1816	Slide Plate: Regulator Bracket
57	08-SM-1012	Screw: PN HD 4Ma x 10
58	08-SM-1998	Screw: Set SL 5Ma x 10
59	08-SM-1455	Screw: Set 8Ma x 10
60	01-SM-1814	Regulator Bracket
61	08-SM-1809	Spring: Carriage (2 qty.)
62	09-SM-1869	Guide Bar
63	09-SM-1999	Wear Strip: Guide Bar
64	09-SM-1817	Platform Carriage
	30-SM-1817	Platform Carriage Assembly (Includes: 64 & 67-71)
65	08-SM-1870	Screw: Guide Bar Mounting, 6Ma x 20 (2 qty.)
66	09-SM-1810	Shaft: Platform Carriage
67	08-SM-1010	Washer: Flat 8-mm (2 qty.)
68	09-SM-1887	Roller: Platform Carriage #8001
69	08-SM-1890	Screw: HX HD 6Ma x 20, Black Ox

(cont.)

ITEM NO.	PART NO.	DESCRIPTION
70	08-SM-1818	Screw: Set, SL 8Ma x 25, Nylon
71	08-SM-1885	Nut: Jam Hex 8Ma
72	23-SM-1827	Bracket: Platform
73	08-SM-1010	Washer: Flat 8-mm (2 qty.)
74	08-GSM-170	Screw: Socket HD 8Ma x 20, Black Ox (2 qty.)
75	08-SM-1515	Nut: Hex 8Ma
76	08-SM-1514	Washer: Star 8-mm
77	08-SM-1832	Bracket: Capacitor Mounting
78	05-SM-1833	Capacitor: 18MF, 400V
	05-SM-860	Capacitor: 7.5MF, 370V
79	08-SM-1871	Nut: Hex Lock 6Ma
80	08-SM-1102	Washer: Flat 6-mm
81	08-SM-1831	Stud: Motor Adjusting & Mounting
82	30-SM-1834	Motor Assembly: 115V/60Hz
	30-SM-1835	Motor Assembly: 220V/50Hz
83	09-SM-1903	Motor Installation/Removal Tool
▶ Service Note: Part No. 09-SM-1903 is required for motor installation and removal		
84	06-SM-1829	Belt: TB2-380
85	08-SM-1830	Stud: Motor Mounting

ITEM NO.	PART NO.	DESCRIPTION
86	08-SM-1012	Screw: PN HD 4Ma x 10
87	09-SM-1828	Knob: Platform Mounting
88	09-SM-1826	Platform
	30-SM-1826	Platform Assembly (Includes: 72-74 & 88-94)
89	06-SM-1825	Handle: Foodpusher
90	09-SM-1824	Foodpusher With Spikes
	30-SM-1824	Foodpusher Assembly (Includes: 89-92)
91	06-SM-1823	Nylon Rider: Foodpusher
92	09-SM-1822	Spike: Foodpusher (13 qty.)
93	09-SM-1821	Shaft: Foodpusher
94	08-SM-479	Screw: Set 5Ma x 5 (3 qty.)
95	08-SM-1891	Pin: Locating
96	30-SM-1844	Knife Pulley Assembly (Includes: 95-99)
97	08-SM-1418	Bearing: #204 (2 qty.)
98	09-SM-1848	Retaining Ring: Internal, 47-mm
99	09-SM-1849	Retaining Ring: External, 20-mm
100	08-SM-1866	Screw: CSK Phl. HD 5Ma x 14 (3 qty.)
101	23-SM-1836	Knife Cover
102	09-SM-1837	Knife: 12"

REMEMBER...

The parts you see here are just a sample of what we carry!