

Replacement Gas Appliance Hoses

General Information

- For a Supr-Safe Gas connector with a B-Type quick disconnect coupling, order BQB Series.
- Replacement and uncoated connectors available in 12" lengths.

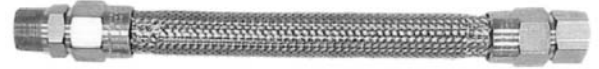


Replacement Gas Connectors with Plastic Coating

Available in 24", 36", 48", 60" and 72"

PART NO.	INSIDE DIAMETER
1650 BP	1/2"
1675 BP	3/4"
16100 BP	1"
16125 BP	1-1/4"

- NOTE: "BP" Series: Stainless steel corrugated hose, encased in stainless steel braid, covered with a thick Supr-Flex™ coating.



Uncoated Replacement Gas Connectors

Available in 24", 36", 48", 60" and 72"

PART NO.	INSIDE DIAMETER
1650 B	1/2"
1675 B	3/4"
16100 B	1"
16125	1-1/4"

- NOTE: "B" Series: Stainless steel corrugated hose, encased in stainless steel braid.



Uncoated Moveable Connectors with Quick Disconnect

Available in 24", 36", 48", 60" and 72"

PART NO.	INSIDE DIAMETER
1650 BQ	1/2"
1650 BQB	1/2"
1675 BQ	3/4"
1675 BQB	3/4"
16100 BQ	1"
16100 BQB	1"
16125	1-1/4"

- NOTE: "BQ" Series: Stainless steel corrugated hose, encased in stainless steel braid, and fitted with an A-Type "push-to-connect" quick disconnect coupling. Ships with elbow.

Supr-Safe® Quick Disconnect Gas Appliance Hoses

General Information

- For Reverse quick disconnect applications (nipple attached to hose), contact us about "BPV" Connectors.
- All assemblies available in 12" lengths.
- Gas connectors available with B-style quick disconnect.
- Add "BX" to the end of part number to receive 24", 36" or 48" gas connector in display box.



BPQS Connectors with Single Supr-Swivel and QD

Available in 24", 36", 48", 60" and 72"

PART NO.	INSIDE DIAMETER
1650 BPQS	1/2"
1675 BPQS	3/4"
16100 BPQS	1"
16125 BPQS	1-1/4"

- NOTE: "S" suffix denotes Supr-Safe gas connector fitted with the Supr-Swivel coupling on gas supply end. Gas connectors available with B-style quick disconnect and elbow.



BPQ and BPQB Series Supr-Safe Gas Connectors with QD's

Available in 24", 36", 48", 60" and 72"

PART NO.	INSIDE DIAMETER
1650 BPQ	1/2"
1650 BPQB	1/2"
1675 BPQ	3/4"
1675 BPQB	3/4"
16100 BPQ	1"
16100 BPQB	1"
16125 BPQ	1-1/4"

- NOTE: "BPQ" Series: stainless steel corrugated hose, encased in stainless steel braid, covered with a thick Supr-Flex PVC coating and fitted with an A Type "Push-to-Connect" quick disconnect coupling and elbow. For a Supr-Safe Gas Connector with B Type quick disconnect coupling, order BPQB Series.



BPQ2S Connectors with Double Supr-Swivel and QD

Available in 24", 36", 48", 60" and 72"

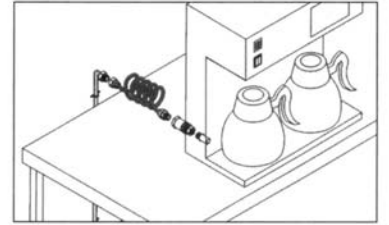
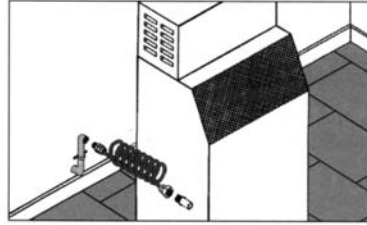
PART NO.	INSIDE DIAMETER
1650 BPQ2S	1/2"
1675 BPQ2S	3/4"
16100 BPQ2S	1"
16125 BPQ2S	1-1/4"

- NOTE: "2S" suffix denotes Supr-Safe gas connector fitted with the Supr-Swivel coupling on both the equipment and gas supply end.

Swirl™ Hoses — Water Supply Line

General Information

- Maximum allowable temperature rating: 160°
- Maximum allowable operating pressure: 100 PSIG
- Standard fitting combination:
 - Fixed Male x Female Swivel.
 - All hose assemblies include a brass elbow fitting.
- Available in 48", 72", 96" and 144"
- When ordering, add length after part number



1. 71 & 72 Series come with a Male Adapter x Female Elbow
2. 73 Series comes with a Male Adapter x Male Elbow
3. Coffee Machine Kits include Male NPT Adapter x Female Flare Fitting

Brass Quick Disconnect — 2-Way



PART NO.	INSIDE DIAMETER
9850-1212	1/4"
9850-2222	3/8"
9850-3232	1/2"

- NOTE: When ordering, add length after part number.

Swirl Hose Assemblies — Male x Female

PART NO.	INSIDE DIAMETER
71-1114	1/4"
72-2124	3/8"
73-3134	1/2"

- NOTE: When ordering, add length after part number.

Swirl Hose Assemblies — Male x Quick Disconnect

PART NO.	INSIDE DIAMETER
71-1115	1/4"
72-2125	3/8"
73-3135	1/2"

- NOTE: When ordering, add length after part number.

Brass Fittings



PART NO.	INSIDE DIAMETER
90-1112-10	1/4" M. NPT x 1/4" F. Flare
90-1122-10	1/4" M. NPT x 3/8" F. Flare

- NOTE: When ordering, add length after part number.

Elbows



PART NO.	INSIDE DIAMETER
95-1112-10	1/4" M. NPT x 1/4" F. Flare
95-2122-10	3/8" M. NPT x 3/8" F. Flare
95-3131-10	1/2" M. NPT x 1/2" M. NPT

- NOTE: When ordering, add length after part number.

Coffee Machine Kit — Male x Female

PART NO.	INSIDE DIAMETER
71-1118	1/4" M. NPT x 1/4" F. Flare
72-1128	1/4" M. NPT x 3/8" F. Flare

- NOTE: When ordering, add length after part number.

Power Force™ Waste Outlets/Drains



Twist Handle Waste Outlets

PART NO.	SINK OPENING	DRAIN OUTLET (NPS)
D50-4161	3"	1-1/2"
D50-4160	3"	2"
D50-7100	3-1/2"	1-1/2"
D50-7200	3-1/2"	2"



Lever Handle Waste Outlets

PART NO.	SINK OPENING	DRAIN OUTLET (NPS)
D10-4161	3"	1-1/2"
D10-4160	3"	2"
D10-7300	3-1/2"	1-1/2"
D10-7400	3-1/2"	2"

Twist Handle Waste Outlets with 1-1/4" Overflow Outlet

PART NO.	SINK OPENING	DRAIN OUTLET (NPS)
D50-4151	3"	1-1/2"
D50-4150	3"	2"
D50-7110	3-1/2"	1-1/2"
D50-7210	3-1/2"	2"

Lever Handle Waste Outlets with 1-1/4" Overflow Outlet

PART NO.	SINK OPENING	DRAIN OUTLET (NPS)
D10-4151	3"	1-1/2"
D10-4150	3"	2"
D10-7310	3-1/2"	1-1/2"
D10-7410	3-1/2"	2"

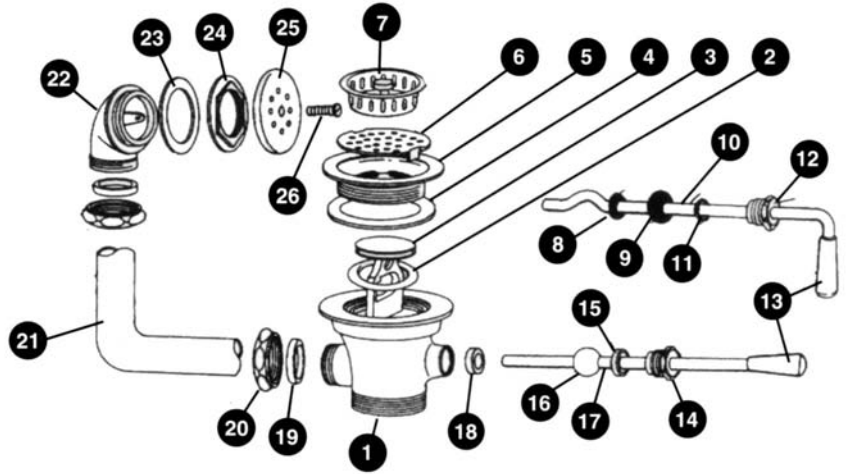
Whaley Foodservice Repairs is proud of our 60 years of dependable, reliable service and we bring it to work with us every day.

Power Force™ Drain Replacement Parts

Lever and Twist Handle Waste Outlets

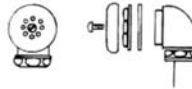
ITEM NO.	DESCRIPTION
1	Waste Outlet Body (Overflow Outlet shown)
2	Stopper O-Ring, Neoprene
3	Stem Valve
4	Head Gasket
5	Face Flange, Stainless Steel
6	Flat Strainer, Stainless Steel
7	Crumb Cup Strainer, Stainless Steel
8	E-Ring
9	Washer
10	Twist Handle Assembly
11	Rubber Ring
12	Packing Nut (Brass) Lever Model
13	Black Thermal Knob
14	Packing Nut (Brass) Lever Model
15	Packing Nut Bushing
16	Brass Ball
17	Lever Handle Assembly
18	Body Bushing (Lever Model)
19	Slip Joint Locknut
21	One Piece Overflow Elbow
22	Overflow Head for 1-1/4" (32MM) Tubing
23	Gasket
24	Flanged Locknut
25	Stainless Steel Strainer for Overflow Head
26	Strainer Mounting Screw

▶ NOTE: Please call for parts information.



Over Flow Head

Brass Nickel Plated with
Stainless Steel Faceplate
Part # E50-4580



Elbow

Brass Nickel Plated
Part # E48-4660



Replacement Parts

ITEM NO.	PART NO.	DESCRIPTION
	PF-39KIT	Drain Gasket kit with all gaskets necessary to repair 3" or 3-1/2" drains. Includes: Head gaskets for 3" and 3-1/2" drains, stopper o-ring, slip joint washer, and body bushing for lever model.
4	D10-X009	Head Gasket for 3" Sink Opening
4	D10-X010	Head Gasket for 3-1/2" Sink Opening
5	D10-X011	Face Flange for 3" Sink Opening
5	D10-X012	Face Flange for 3-1/2" Sink Opening
6	D10-X013	Flat Strainer, Stainless Steel for 3" Sink Opening
6	D10-X014	Flat Strainer, Stainless Steel for 3-1/2" Sink Opening
3	D10-X020	Stem Valve (Stopper)
2	D10-X021	Stopper O-Ring, Neoprene
	E50-4580	Overflow Head for 1-1/4" Tubing
	E48-4660	Overflow Elbow, One Piece, 1-1/4"