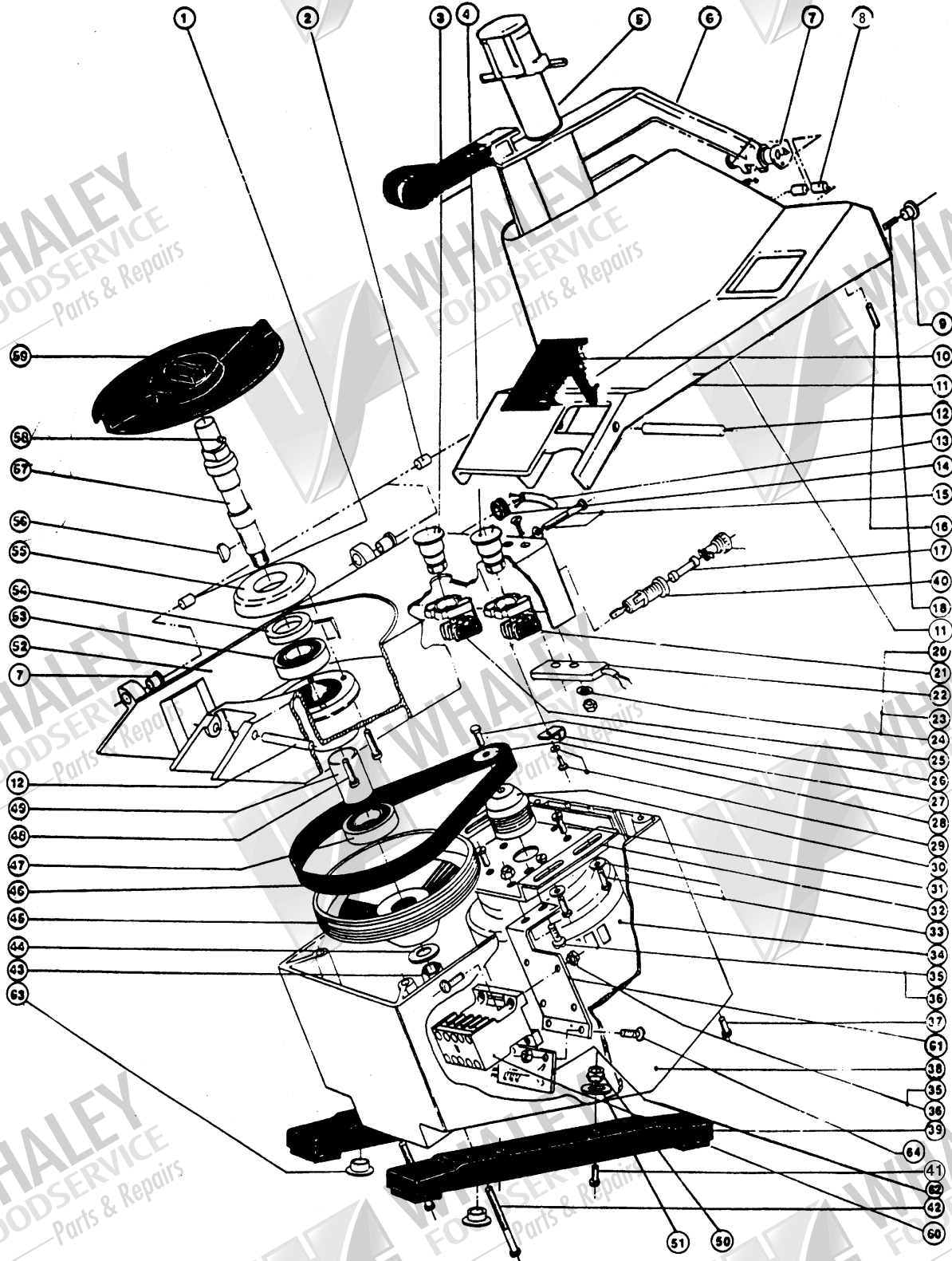


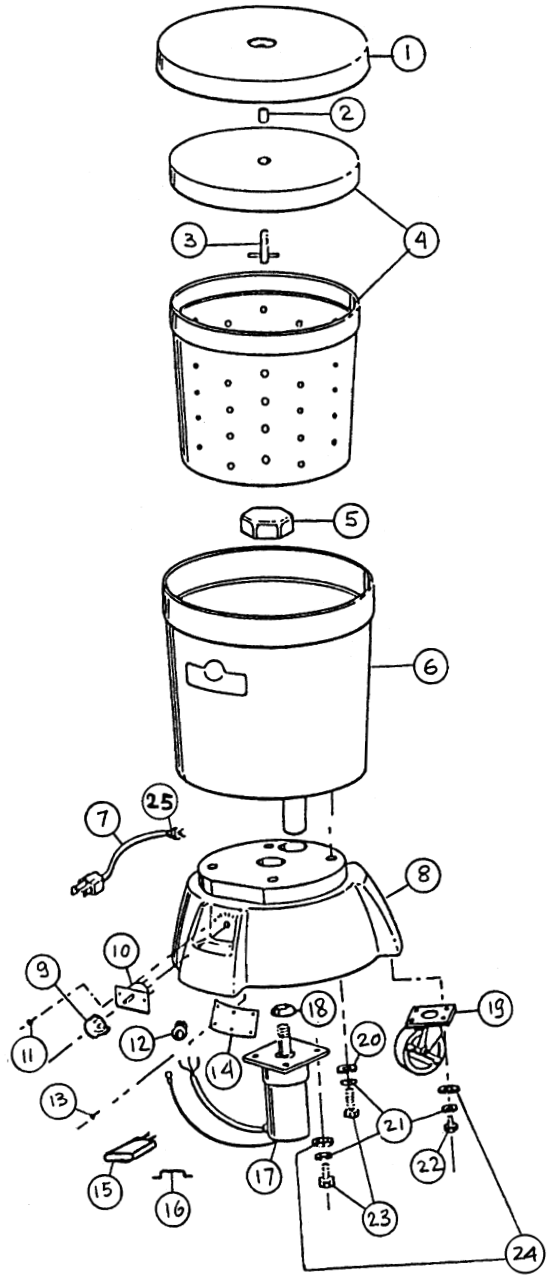
TR-22 and TR-23 Food Processor



ITEM NO.	PART NO.	DESCRIPTION
1 & 2	22-20486	Hinge Pin, New Style
3	22-12162	Push Button Start Switch (Black)
4	22-12163	Push Button Stop Switch (Red)
5	22-0026	Feedstick
6	22013	Feeder Assembly w/Bushing
7	22-0012	Bushing
8	22-20702	Pin, New Style
9	22-0037	Plastic Cap
10	22-0023	Latching Handle
11	22-0021	Lid/Side Pins & Handle
12	22-0022	Latching Handle Hinge Pin
13	1021	Power Cord 10'
14	22-0028	Grommet
15	21-0137	Screw, C 6 x 50-mm with Lock Washer
16	22-0033	Magnet
17	TR23-004	Fuse 15 Amp
18	22-5017	Socket Head Screw M 4 x 8
19	22-0136	Rubber Bumper
20	22-5002	Screw M 3 x 16 Flat Head SS
21	(Comes with #4)	
22	25-12062	Magnetic Safety Switch
23	22-5003	Washer Flat, 3 SS
24	22-5004	Nut, Hex M 3 SS
25	(Comes with #3)	
26	21-0121	Screw, H 5 x 15-mm
27	22-0043	Cable Clamp
28	21-0120	Flat Washer LL5
29	22-5007	Screw, C 4 x 6-mm
30	22-0019	Driving Pulley
31	22-5014	Screw, H 6 x 10-mm
32	22-0038	Motor Mounting Plate
33	22-5005	Screw, H 5 x 12-mm w/ Capacitor & Relay
34	22015	Motor Assembly- TR22
	TR23-002	Motor Assembly- TR23
35	1027	Screw, 8-32 x 1/2" w/ Capacitor & Relay
36	1028	Nut, 8-32
37	22-5016	Screw, RL 5 x 12-mm

ITEM NO.	PART NO.	DESCRIPTION
38	22-0015	Casing
	22-4278	SS Casing
39	22-0025	Support Block with Feet
	22-0040	Feet Only
40	1130	Fuse Holder
41	22-5010	Screw, CL 5 x 16-mm
42	21-0136	Screw, C 5 x 80-mm
43	21-0143	Self-Locking Nut, M14
44	22-5015	Flat Washer, M14
45	22-0013	Driver Pulley
46	22-0020	Drive Belt
47	21-0122	Bearing, Small Lower
48	22-5013	Screw, M 4 x 30 SCRT HD
49	22-0036	Spacer
50	22-5012	Nut, M5
51	22-5011	Washer, Flat M5
52	22-0008	Body
53	21-0123	Bearing, Large Upper
54	22-0010	Water Seal
55	22-0014	Cap with Seal
56	21-0127	Key
57	22-0018	Drive Shaft
58	22-0039	Drive Pin, 5 x 24-mm
59	22-0031	Ejector Plate
60	22-5206	Contacto
61	22-0032	Relay Bracket
62	22019	Brake, P.C. Board Assembly
63	22-0135	Plug
64	1157	Screw, 6-32 x 1/2"
65	1158	Keo Nut, 6-32
	22-4284	Reducer Sliding Lock
	22-0141	Capacitor
	22-0142	Klixon Relay Start
	22021	Feeder Throat Reducer
	TR23-6099	Rubber Handle End
	1021	8' Electrical Cord

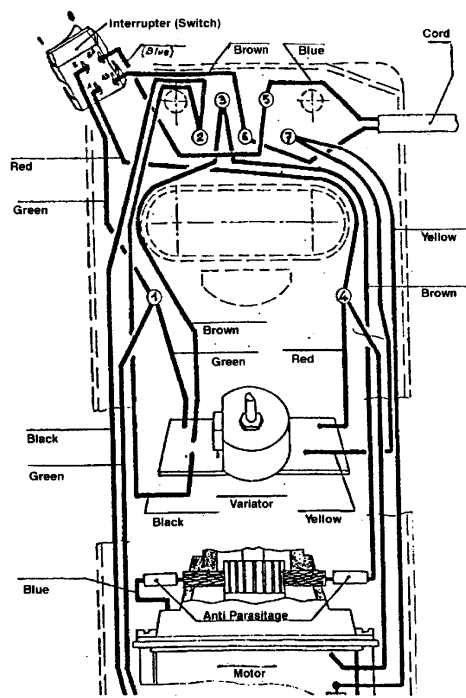
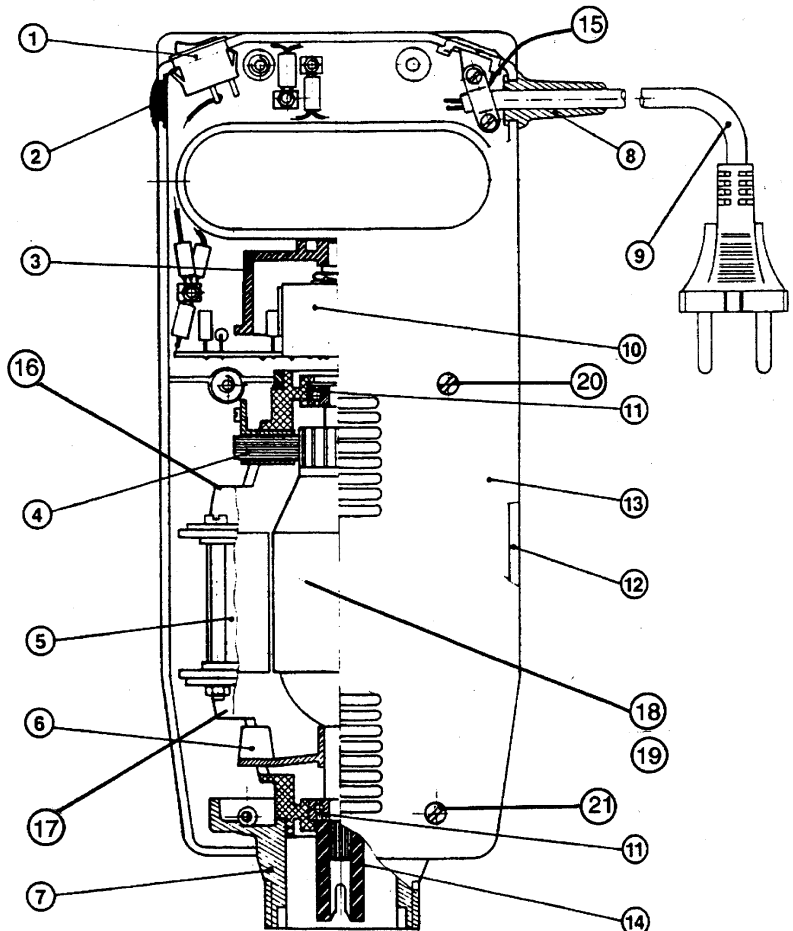
VP-1 Salad and Vegetable Drier



ITEM NO.	PART NO.	DESCRIPTION
1	30011	VP-1 Outer Lid — SS
	30006	VP-3 Outer Lid — Poly (Green)
2	30-0018	Bushing
3	30-0016	"T" Handle
4	30010	Inner Bucket and Lid
5	30-0014	Octagonal Drive Casting
6	Please Call	Main Body
7	1022	Electrical Cord
8	30-0052	VP-1 Base — Green
	30-0042	VP-3 Base — Gray
9	31-007	Timer Knob
10	30-0004	Timer
11	1157	6-21 x 1/2" Screw (2 qty.)
12	1520	Grommet
13	30-0047	1/2" x 8 Sheet Metal Screw (6 qty.)
14	30-0046	Cover Plate
15	30-0013	Capacitor on Motor
	30-0006	Capacitor (Old Style)
16	30-0015	Mounting Strap (Old Style)
17	30004	Motor — Franklin With Capacitor
18	30-5202	Water Seal
19	30-0034	Caster (3 qty.)
20	30-0039	1/4" Flat Washer (Large) (4 qty.)
21	30-0038	1/4" Lock Washer (20 qty.)

ITEM NO.	PART NO.	DESCRIPTION
22	30-0037	1/4"-20 x 3/4" Bolt (12 qty.)
23	30-5001	1/4"-20 x 1" Bolt (4 qty.)
24	30-5003	1/4" Flat Washer (Small) (16 qty.)
	30-5003	1/4" Flat Washer (Small) VP-1 (20 qty.)
	30-0036	VP-1 Lid Hook (16 qty.)
25	22-0028	Strain Relief

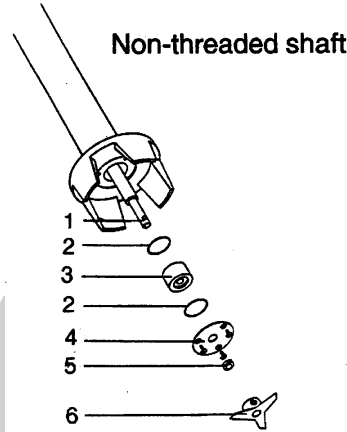
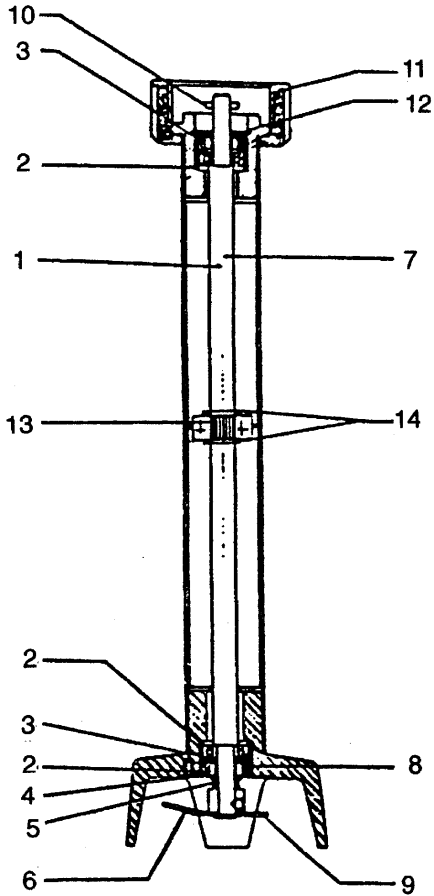
Model 103 Portable Food Mixer



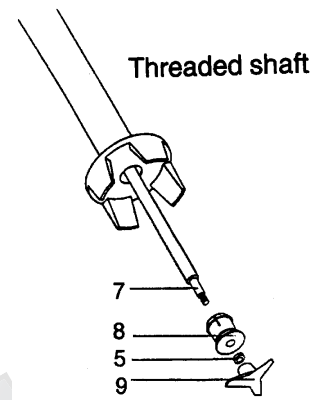
Power Pack

ITEM NO.	PART NO.	DESCRIPTION
1	23-7930	Complete Switch
2	23-18157	Rubber Plug
3	23-15969	Knob Only
4	23-15954	Motor Brush Set
5	23-15937	Motor Assembly
6	23-15988	Motor Fan
7	23-15907	Threaded Neck
8	23-15919	Grommet, Strain Relief
9	23-15996	Power Cord
10	23-18571	Variable Speed Control
11	23-8088	Motor Bearing
12	23-18534-B	Rear Plastic Housing/Screws

ITEM NO.	PART NO.	DESCRIPTION
13	23-18534-F	Front Plastic Housing
14	23-15906	Drive Coupling
15	23-15970	Relief Clamp/Screws
16	23-15968	Upper Motor Housing With Fusible Link/Brush
17	23-15927	Lower Motor Housing
18	23-6772	Copper Field Winding
19	23-2421	Armature With Fan/Drive
20	23-16125	1-1/2" Screw, Housing (2 qty.)
21	23-18549	3/4" Screw, Housing (6 qty.)
	23-16057	Rubber Plug/Slanted
	23-16058	Rubber Plug/Straight



With this style, the bottom of the shaft is not threaded; a set screw holds the blade; the bottom bearing is the same as the top one; and the steel disc with three screws is at the base of the tube.



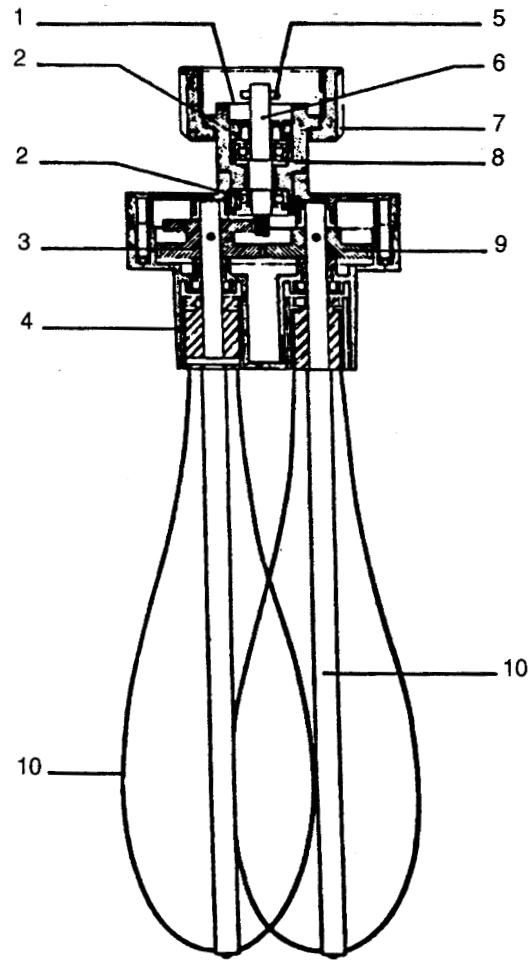
With this style, the bottom of the shaft is threaded; the blade screws onto the shaft; the bottom bearing differs from the top bearing by the larger white housing; and there is no metal disc on the base of the tube.

Cutter Tube Attachments

ITEM NO.	PART NO.	DESCRIPTION	ITEM NO.	PART NO.	DESCRIPTION
				23-16060	Inner Shaft With Pin/Bearing (24c)
				23-18528	Old Style Threaded (24c)
1	23-15939	Inner Shaft (Non-threaded 15c)		23-16062	Upper Bearing (24c)
	23-18528	Inner Shaft (Non-threaded 24c)	8	23-18588	Complete Lower Bearing Assembly (New Style)
2	23-18163	O-Ring		23-16065	Complete Lower Bearing Assembly (Old Style)
3	23-15953	Upper Bearing Assembly (15c Old Style)		23-15998	3-Prong Bottom Blade (Old Style Threaded)
	23-16113	Upper Bearing Assembly (15c New Style)		23-25007	3-Prong Bottom Blade (New Style)
4	23-15948	Small Metal Plate With Screws	9	23-15998	3-Prong Bottom Blade (Old Style Threaded)
5	23-15926	Seal Between Plate & Blade (Old Style)		23-25007	3-Prong Bottom Blade (New Style)
	23-18162	Seal Between Plate & Blade (New Style)	10	23-15999	Small Cross Pin
6	23-15904	3-Prong Bottom Blade	11	23-15950	Aluminum Threaded Collar/Clips
7	23-16066	Inner Shaft With Pin/Bearing (12c)	12	23-18621	Snap Ring (15c)
	23-16110	Shaft Only New Style (Threaded 15c)		23-15931	Snap Ring (24c)
	23-18566	Shaft With Bearing and Blade (New Style Threaded)	13	23005	Center Bearing Assembly (24c)
	23-18643	Shaft With Bearing, No Blade (New Style Threaded)	14	23-16061	Small Snap Ring Set (24c)

Cutter Tube Servicing Kit 12"/15"

ITEM NO.	PART NO.	DESCRIPTION
	23-18643	Kit for 15" model
	23-18672	Kit for 12" model
Bermixer 12"/15"		
1	23-25250	Spacer
Lower Bearing Assembly		
2	23-16100	Lower Bushing
3	23-15928	O-Ring, 22" x 2"
4	23-16101	Lipped Seal, 8" x 18" x 5"
5	23-16096	Spring Washer
6	23-8088	Bearing, 8" x 22" x 7"
Equipped Shaft		
7	23-16109	Shaft (12")
	23-16110	Shaft (15")
8	23-15999	Pin
9	23-15928	O-Ring, 22" x 2"
10	23-8088	Bearing, 8" x 22" x 7"
11	23-16096	Spring Washer
12	23-16113	Upper Bushing



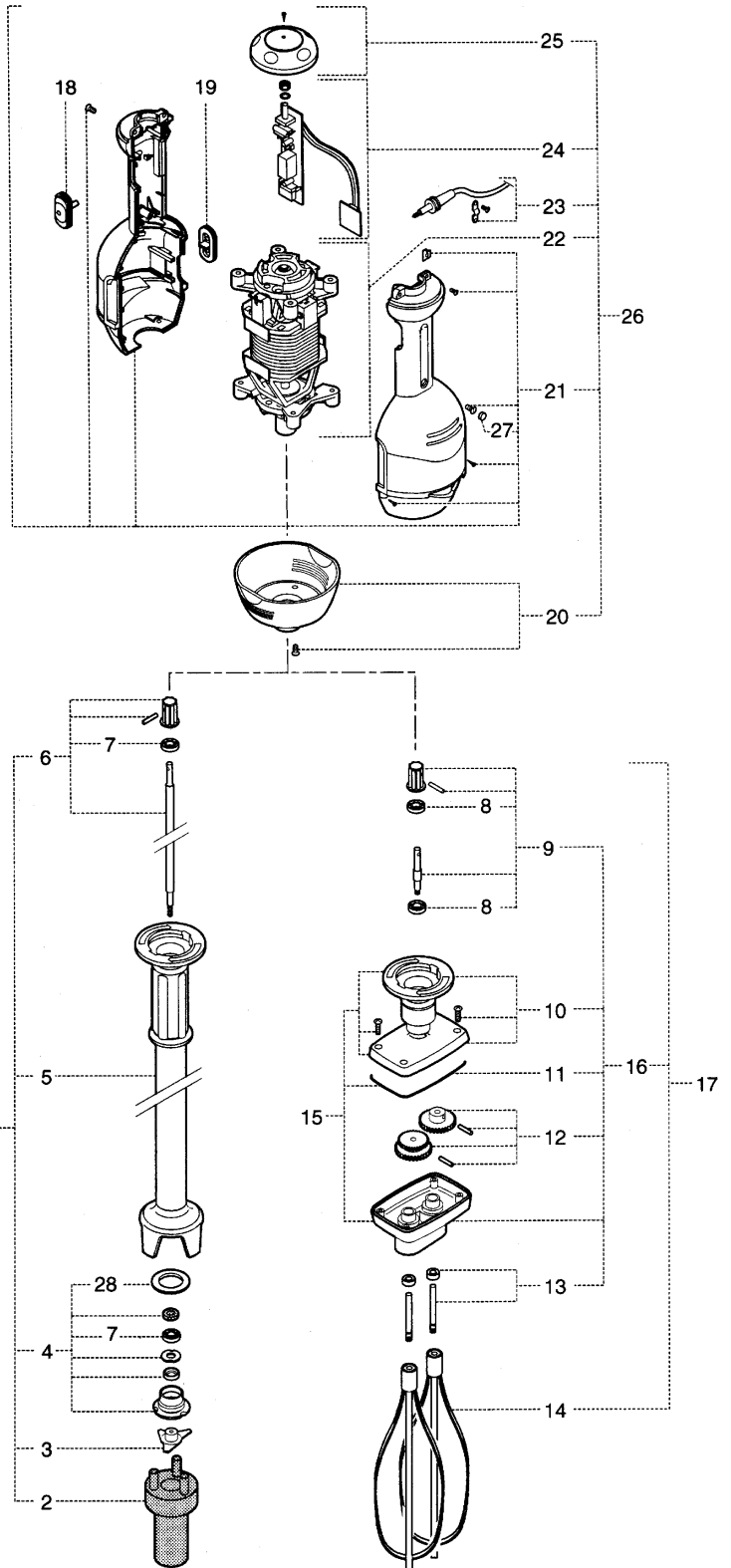
**WE'RE YOUR
ONE STOP
SHOP FOR
ALL YOUR
PARTS
NEEDS!**

Beater Whip Attachment

ITEM NO.	PART NO.	DESCRIPTION
1	23-18621	Snap Ring
2	23-8088	Ball Bearing
3	23-15944	Inner Double Drive Gear Shaft
4	23-15943	Beater Gear Box Housing With Bushing/Collar

ITEM NO.	PART NO.	DESCRIPTION
5	23-15999	Small Cross Pin
6	23-15947	Center Drive Shaft With Bearing/Pin
7	23-15950	Aluminum Threaded Collar With Circlips
8	23-18163	O-Ring
9	23-15945	Inner Single Drive Gear Shaft
10	23-8072	Beater Whip

Portable Mixer 2000



ITEM NO.	PART NO.	DESCRIPTION
1	22345	Mixer Equipment Assembly 40
	22346	Mixer Equipment Assembly 50
	22833	Mixer Equipment Assembly 60
2	22832	Dismantling Tool (Cutter — Lower Spacer)
3	22078	SS Cutter
4	22491	Lower Spacer Assembly
5	22471	Mixer Tube Stripped 40
	22472	Mixer Tube Stripped 50
	23296	Mixer Tube Stripped 60
6	22477	Shaft Assembly 40
	22473	Shaft Assembly 50
	23297	Shaft Assembly 60
7	22479	SS Bearing (Bag of 2) (2 qty.)/608H 2RS
8	22480	Bearing (Bag of 2) (2 qty.)/608 2RS
9	22474	Drive Shaft Assembly
10	22461	Gear Housing Cover Assembly
11	22476	Housing Seal (Bag of 10)
12	22482	Set of Gears
13	22483	Output Shaft Assembly (2 qty.)
14	8072	Whisk Tool (1 + 1 qty.)
15	22481	Gear Housing Empty
16	22484	Gear Housing Assembly
17	22347	Whisk Equipment Assembly
18	22459	Top Cap (Bag of 10)

ITEM NO.	PART NO.	DESCRIPTION
19	22460	Bottom Cap (Bag of 10)
	22475	Lower Cover w/o Red Sticker (Bag of 10)
20	22486	Aluminum Housing Assembly
21	22455	Set of Blue Half Motor Housings
	22456	Set of Grey Half Motor Housings
22	22458	Motor Assembly/220–240V, 50–60Hz
	23323	Motor Assembly/220–240V, 50–60Hz
	22457	Motor Assesmbly/110–120v, 50–60Hz
	23324	Motor Assembly/110–120V, 50–60Hz
	22487	Brushes (Bag of 2) (2 qty.)
23	22464	Standard Power Supply Cable Equipped
	22488	US Power Supply Cable Equipped
	22490	CH Power Supply Cable Equipped
24	22454	Electronic Variator/220–240V, 50–60Hz
	22453	Electronic Variator/110–120V, 50–60Hz
25	22452	Variator Knob Assembly
	22467	Variator Knob Assembly
	22468	CRYPTO Variator Knob Assembly
	22469	DEAN Variator Knob Assembly
26	19664	Blue Motor Unit
	19693	Grey Motor Unit
27	22465	Blue Plug (Bag of 10)
	22466	Grey Plug (Bag of 10)
28	22470	Bearing Bush Seal (Bag of 10)
	15929	Wall Bracket

NO MINIMUMS.

That's right! Whaley Foodservice Repairs has no minimum order requirement. Call us at **(800) 877-2662** to place your order or fax the order to **(888) 877-2660**.