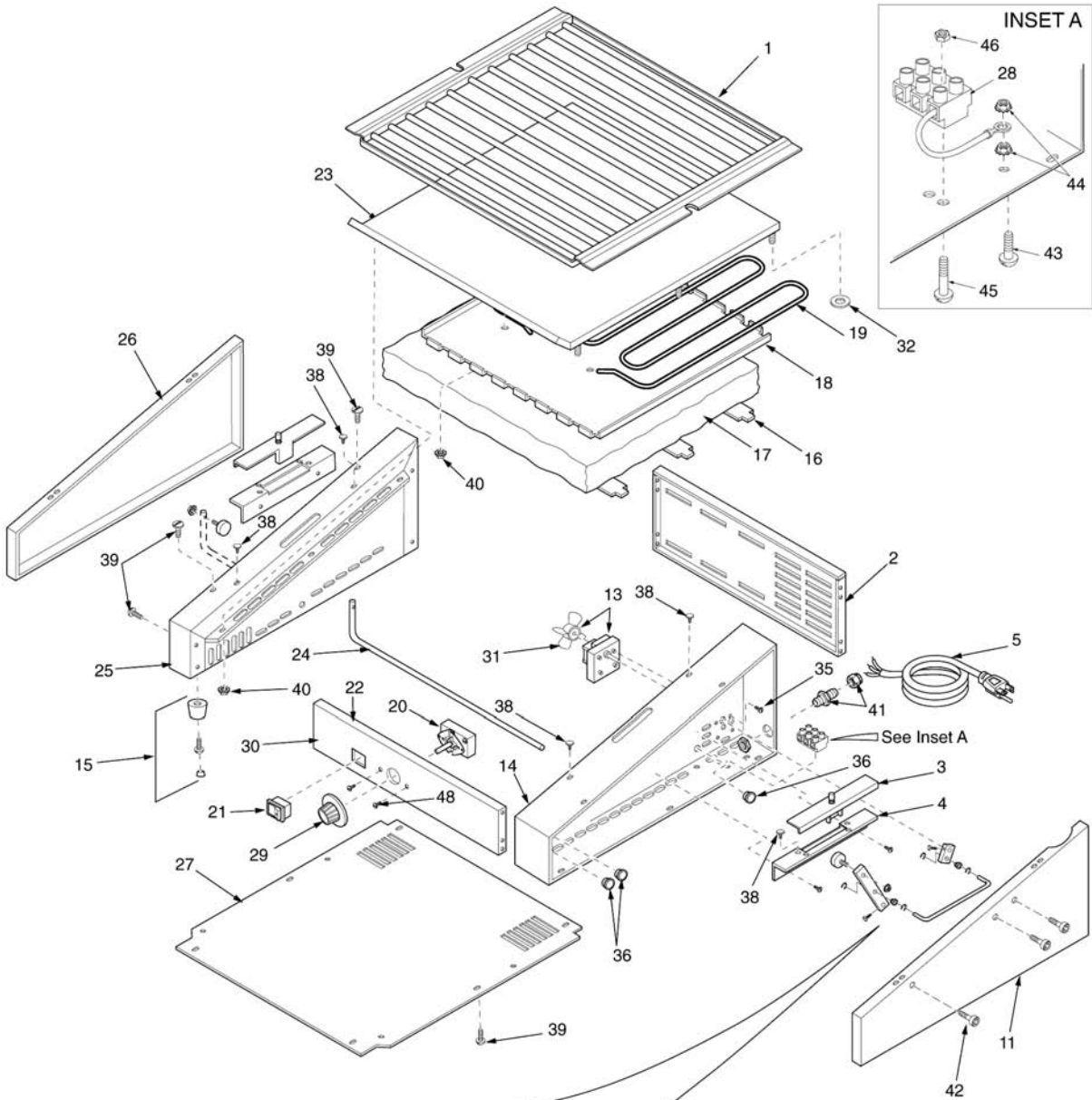


# Hot Dog Corral



**Model HDC-20**

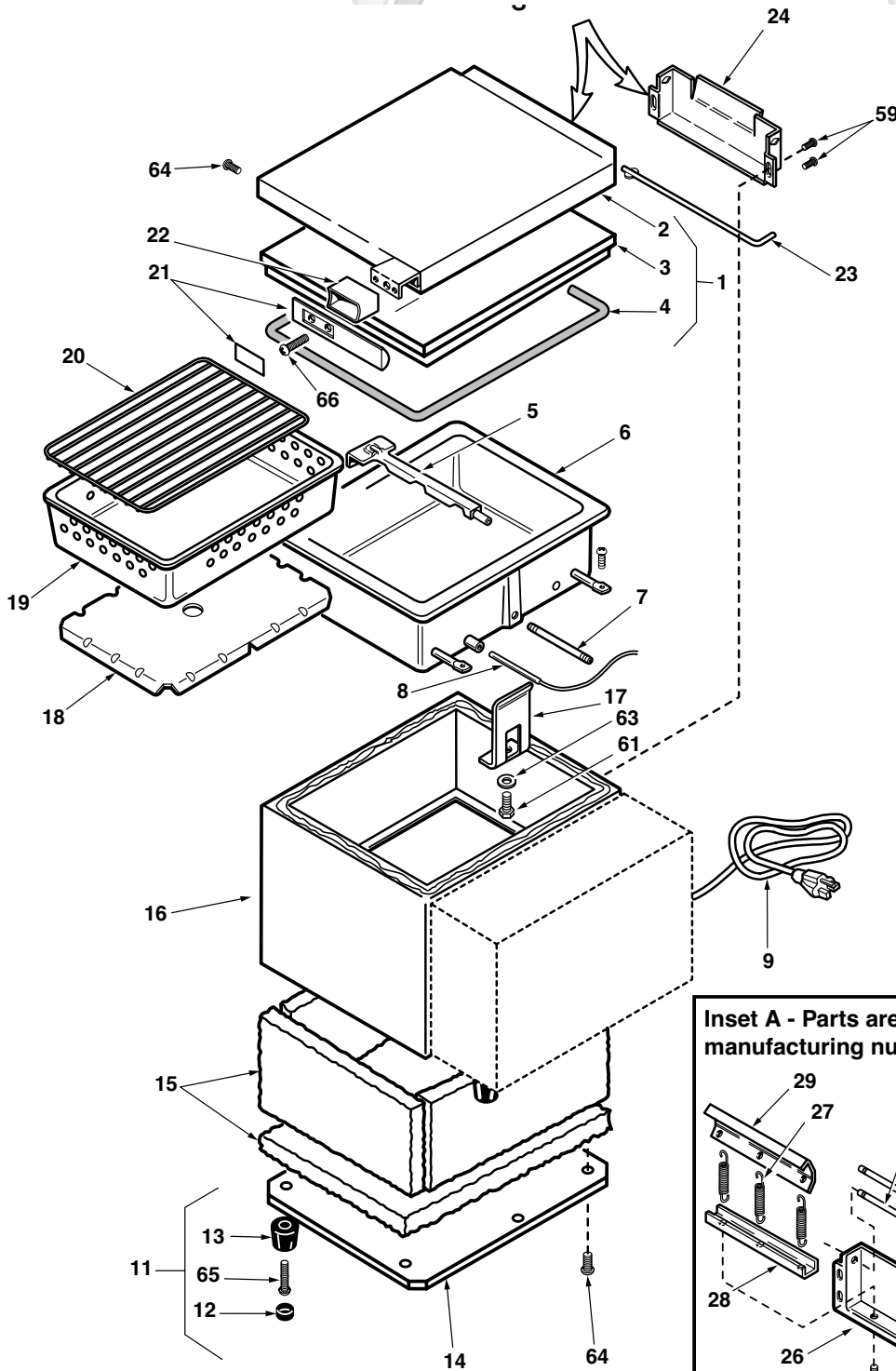
► NOTE: \* Only available in quantities of 10.

ITEM NO.	PART NO.	DESCRIPTION
1	0010434	Driver Assembly
2	0501633	Panel, Rear
3	0500551	Slide Bracket (2 qty.)
4	0020625	Slide Channel (2 qty.)
5	0700463	Power Cord, NEMA 5-15P, 120V
	0700425	Power Cord, CEE 7/7, 230V
	0700556	Power Cord (UK)
6	2100129	Driver Roller (2 qty.)
7*	030P101	Screw, Shoulder Pivot (2 qty.)
8	05K1706	Pivot Arm w/Setscrew
9	05K1705	Motor Arm w/Setscrew
10	080K217	Drive Arm Kit
11	0021213	Cover Panel, RH
12*	300P104	Tubular Clip, 1/8" Diameter
13	7000270	Drive Motor, 120V
	7000271	Drive Motor, 230V
14	0020603	Panel, RH
15	210K127	Foot Kit (Set of 4)
16	0501708	Retainer, Insulation (3 qty.)
17	0400235	Insulation
18	0501670	Retainer, Heater
19	4030227	Heating Element, 120V
	4030232	Heating Element, 230V
20	4030149	Thermostat
21	4010151	Rocker Switch, Power On/Off, 120V
	4010137	Rocker Switch, Power On/Off, 230V
22	0501752	Panel, Front (HDC-20)
	0502125	Panel, Front (HDC-20RC)

ITEM NO.	PART NO.	DESCRIPTION
23	0020605	Grill
24	0800216	Shaft/Arm, Crossover
25	0020604	Panel, LH
26	0021214	Cover, Panel, LH
27	0501631	Panel, Bottom
28	4060304	Terminal Block
29	2100130	Knob, Thermostat, F°
	2100225	Knob, Thermostat, C°
30	1000920	Label, Control Panel
31	4000157	Fan Blade, Motor
32*	325P104	Washer, Flat, SS, 1/4"
33*	215P152	Bearing, Pivot Arm
34*	211P127	Retaining Ring
35*	310P109	Screw, #10-32 x 3/8"
36*	040P119	Snap Bushing, 5/8"
37*	215P151	Bearing Shaft
38*	218P113	Ratchet Fastener Glide
39*	308P115	Screw, #8-32 x 3/8"
40*	310P146	Nut, Hex, #10-32
41	040K251	Strain Relief
42*	325P169	Shoulder Bolt, Socket Hd., 5/16 x 1/2"
43*	308P124	Screw, One-Way, #8-32 x 1/2"
44*	308P143	Nut, Keps, #8-32
45*	306P123	Screw, #6-32 x 7/8"
46*	306P130	Nut, Keps, #6-32
47*	325P166	Setscrew, 1/4-28 x 3/8"
48*	306P104	Screw, #6-32 x 1/4"
49	100936	Roundup Emblem
	040K108	Bushing Bearing Kit (Incl. 2 qty. of 33 & 37; 4 qty. of 34)
	7000193	Food Shield Mounting Kit

Whaley Foodservice Repairs is proud of our 60 years of dependable, reliable service and we bring it to work with us every day.

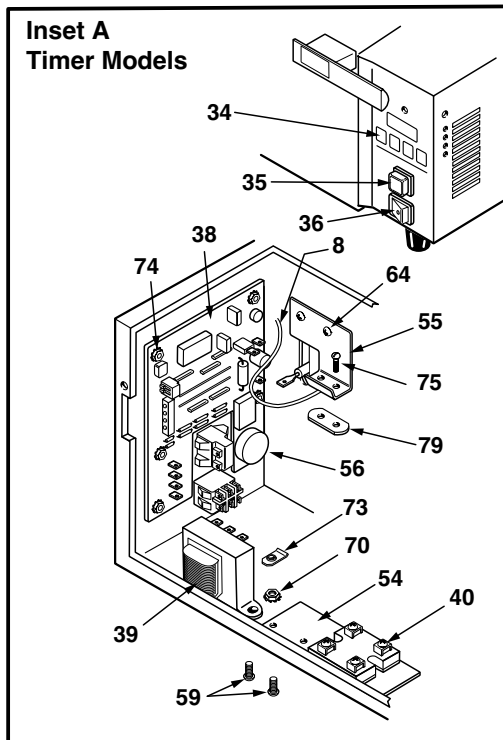
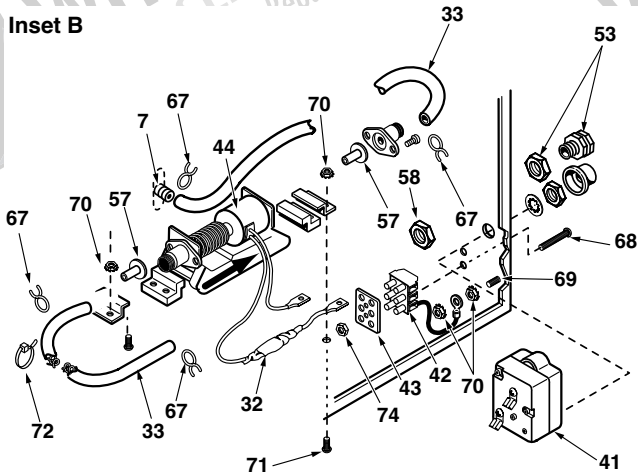
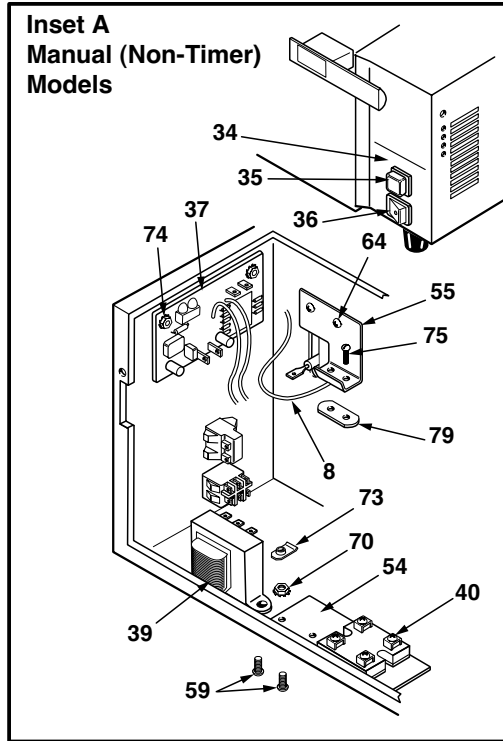
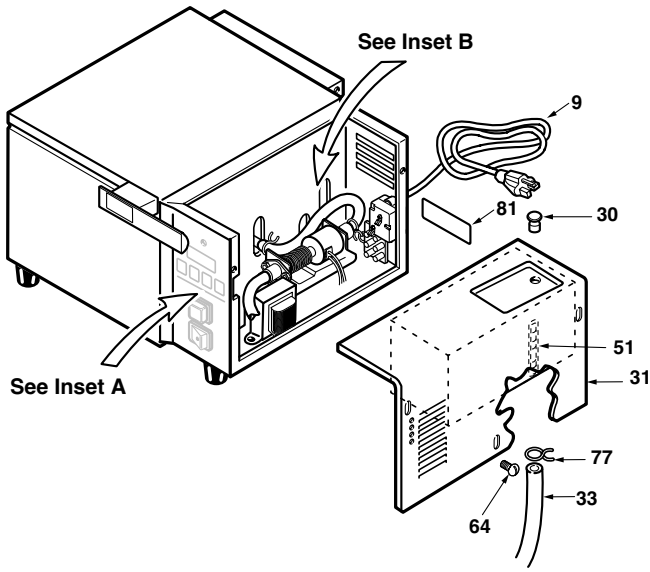
# DFW Food Warmer



**Inset A - Parts are used on DFWT-150 with manufacturing number 9100128 only.**

Inset A diagram showing parts 25 through 30 and 60 through 63. Part 25 is a long metal bar, 26 is a shorter bar, 27 is a spring, 28 is a bracket, 29 is a spring, and 30 is a bracket. Parts 60, 61, 62, and 63 are electrical connectors.





(Illustration on page 14 &amp; 15.)

► NOTE: \* Only available in quantities of 10.

ITEM NO.	PART NO.	DESCRIPTION
1	0011115	Top Cover Assembly (DFW Series) (Incl. Nos. 2, 3 & 4)
	0011154	Top Cover Assembly (DFWT Series) (Incl. Nos. 2, 3 & 4)
	0011162	Top Cover Assembly (DFWT Special Model) (Incl. Nos. 2, 3 & 4)
2	0020578	Shelf, Top Cover (DFW Series)
	0020577	Shelf, Top Cover (DFWT Series)
	0020453	Shelf, Top Cover (DFWT Special Model)
3	0021065	Liner, Top Cover (DFW Series)
	0021090	Liner, Top Cover (DFWT Series)
4	7000122	Gasket, Top Cover (DFW Series)
	7000123	Gasket, Top Cover (DFWT Series)
5	0010145	Spray Tube Assembly (DFW Series)
	0010146	Spray Tube Assembly (DFWT Series)
6	7000124	Steam Generator, 120 VAC (DFW Series)
	7000147	Steam Generator, 120 VAC, Special 1500W (DFW Series)
	7000125	Steam Generator, 230 VAC (DFW Series)
	7000126	Steam Generator, 120 VAC (DFWT Series)
	7000127	Steam Generator, 230 VAC (DFW Series)
7	2190101	Tube, Steam Generator (DFW/DFWT-100 Series)
	2190107	Tube, Steam Generator (DFW/DFWT-200 Series)
8	4050210	Thermistor (Manual Models)
	4050209	Thermocouple (Timer Models)
9	0700451	Power Cord, 120 VAC, 14/3 5-20P
	0700463	Power Cord, 120 VAC, 14/3 5-15P
	0700453	Power Cord, 230 VAC, CEE 7/7
	0700437	Power Cord, 230 VAC, IEC-309
10	7000139	Male Quick Disconnect Kit
11	7000130	Leg Kit (Incl. Nos. 12 & 13)
12	2180145	Cover, Leg (4 qty.)
13	2100230	Leg, 1" (4 qty.)
14	0503069	Base Plate (DFW Series)

ITEM NO.	PART NO.	DESCRIPTION
	0503178	Base Plate (DFWT Series)
15	7000131	Insulation Kit (DFW Series)
	7000132	Insulation Kit (DFWT Series)
16	0021055	Main Housing (DFW Series)
	0021072	Main Housing (DFWT Series)
	0021092	Main Housing (DFWT Special Model)
17	0503174	Retainer, Generator (2 qty.)
18	0503177	Diffuser Pan (DFW Series)
	0503182	Diffuser Pan (DFWT Series)
19	2130102	Perforated Pan (DFW Series)
	2130103	Perforated Pan (DFWT Series)
20	0800106	Trivet (DFW Series)
	0800109	Trivet (DFWT Series)
21	7000133	Handle Kit (Incl. Nos. 22 & 66)
22	0020964	Cover, Handle Bracket
23	0800219	Hinge Pin, Top Cover
24	0501569	Hinge Base, Top Cover
25	0800280	Hinge Pin (DFWT Special Model)
26	0502719	Hinge Base (DFWT Special Model)
27	0600125	Spring (DFWT Special Model) (3 qty.)
28	0020952	Hinge Beam (DFWT Special Model)
29	0502722	Pivot Bracket (DFWT Special Model)
30	2100170	Knob, Water Tank
31	0021063	Access Cover Assembly (100 & 150 Models)
	0503096	Access Cover Assembly (200 & 250 Models)
32	7000214	Diode Assembly
33	7000134	Silicone Tube Kit (Includes 2 Tubes)
34	1000976	Label, Front Panel (Manual Models)
	1001036	Label, Front Panel (Timer Models)
35	4010166	Operate Switch
36	4010151	Rocker Switch, Power On/Off, 120 VAC
	4010137	Rocker Switch, Power On/Off, 230 VAC
37	4070033	Control Board (Manual Models)
38	4070037	Control Board (Timer Models)
39	4010183	Transformer
40	405K125	Relay, Solid State
41	7000135	Hi-Limit Thermostat
42	7000136	Terminal Block Kit (Incl. No. 43)

► NOTE: \* Only available in quantities of 10.

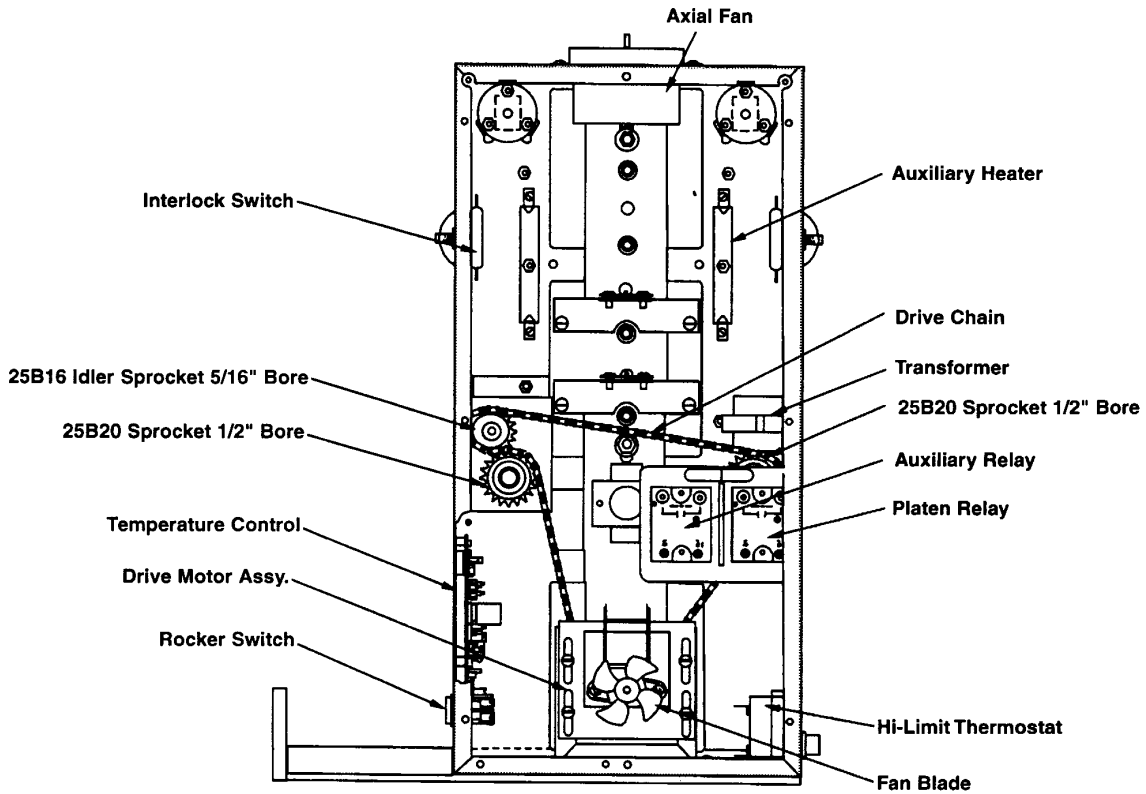
ITEM NO.	PART NO.	DESCRIPTION
43	1000967	Marking Label
44	7000137	Water Pump Kit, 24 VAC (Incl. No. 33)
45	7000142	Outlet Tube Kit (Incl. Nos. 46, 47 & 48)
46	2040114	Elbow, Female, 1/4" Tube
47	2000188	Outlet Tube
48	2040103	Connector, Male, 1/4" Tube
49	4040145	Solenoid, 24 VAC
50	7000138	Quick Disconnect Body & Plate Kit
51	0010159	Filter Assembly, Water Tank
52	0010584	Inlet Hose Assembly
53	040K251	Strain Relief w/Locknut (Incl. #58)
54	0011252	Relay & Heat Sink
55	0503333	Bracket, Temperature Sensor
56	7000156	Audio Alarm Kit
57	7000170	Check Valve Kit, Discharge & Intake
58	0400138	Locknut, Conduit, 1/2"
59	308P104*	Screw, #8-32 x 3/8", SS
60	211P127*	Retaining Ring

ITEM NO.	PART NO.	DESCRIPTION
61*	325P109	Screw, Hex
62*	325P154	Lockwasher
63*	325P104	Washer, Flat
64*	308P103	Screw, #8-32 x 1/4", SS
65*	308P164	Screw, #8-32 x 1", SS
66*	308P132	Screw, #8-32 x 3/4", Flat, SS
67*	211P103	Hose Clamp, 1/2" Diameter
68*	306P123	Screw, #6-32 x 7/8", SS
69*	308P124	Screw, #8-32 x 1/2", 1-Way, SS
70*	308P143	Nut, Hex, #8-32 Keps
71*	308P108	Screw, #8-32 x 3/4", SS
72*	406P107	Cable Tie
73*	300P102	Nut, Tinnerman, U-Type
74*	306P130	Nut, Hex, #6-32 Keps
75*	306P103	Screw, #6-32 x 3/8", SS
76*	020P117	O-Ring
77*	211P101	Hose Clamp, 3/8" Diameter
78*	306P104	Screw, #6-32 x 1/4", SS
79*	301P106	Nut, Spotweld, #6-32
80*	304P105	Nut, Hex, #4-40 Keps
81	1000275	Label, Water & Waste Connection

## WE HAVE ONE OF THE LARGEST INVENTORIES OF OEM PARTS IN THE NATION!

*Our inventory of parts serves the needs of more than 100 Whaley Foodservice Technicians, and meets the needs of our parts customers as well. This inventory is managed by our state-of-the-art computer system which counts every individual transaction to continuously adjust stocking levels.*

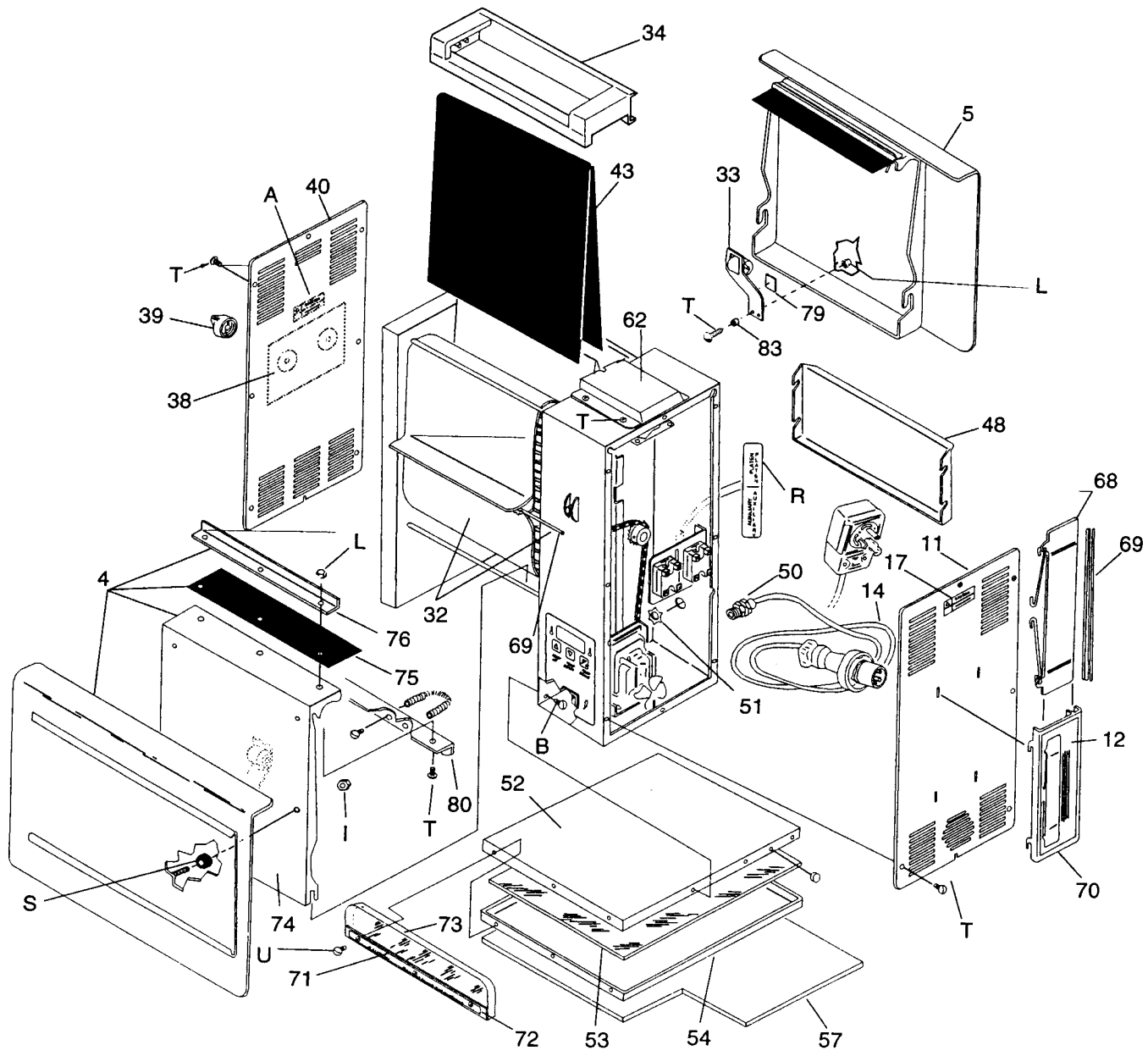
# Model VCT-200 Rapid Toaster

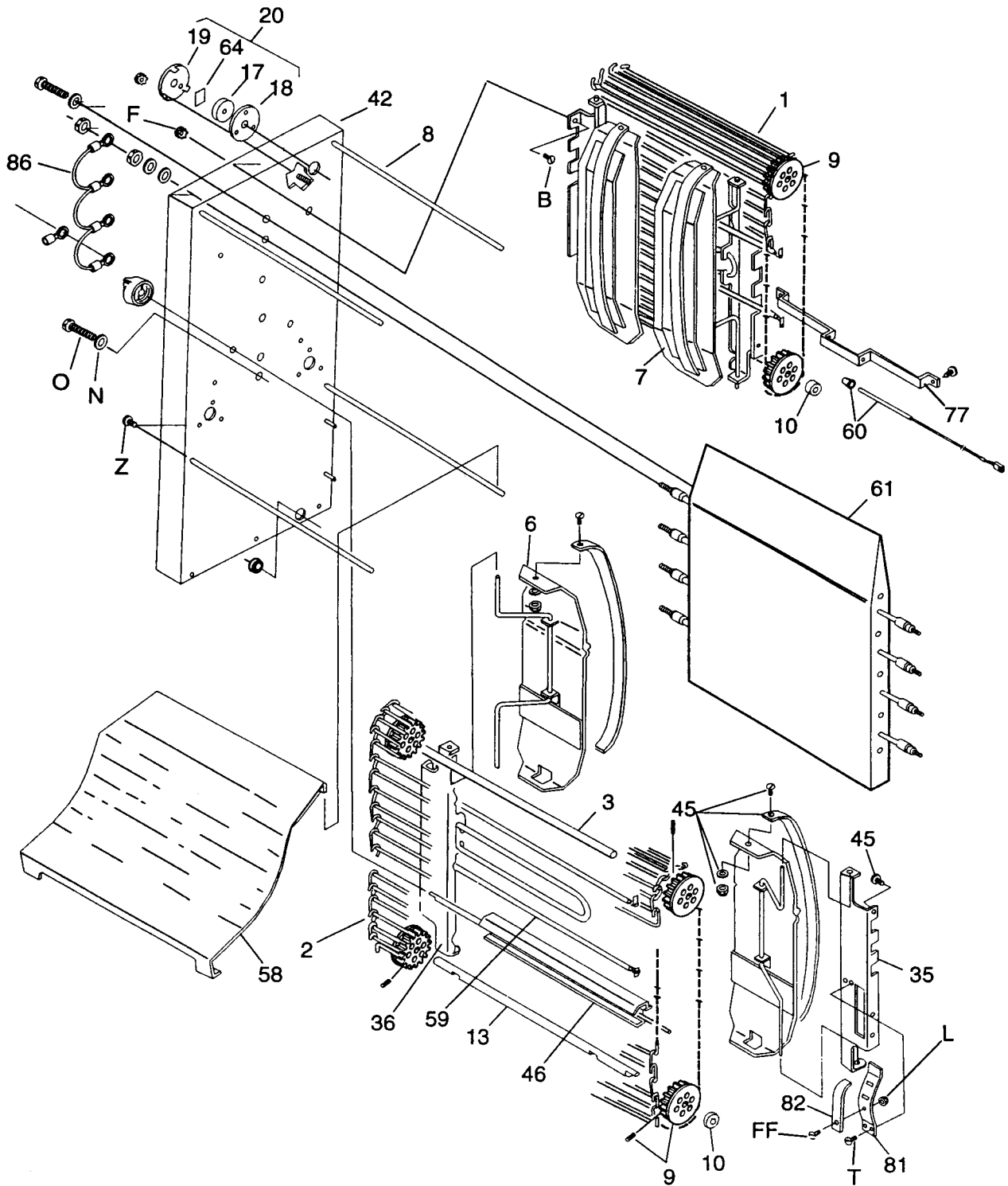


## Hardware List

ITEM NO.	PART NO.	DESCRIPTION
A	100P864	Label, Caution Hot
B	308P115	Screw, #8-32 x 3/8" (10 mm) (2 qty.)
C	310P154	Screw, #10-32 x 3/8" (4 qty.)
D	304P105	Nut, #4-40, Keps
E	406P107	Cable Tie
F	308P143	Nut, #8-32, Keps (3 qty.)
G	310P103	Screw, #10-32 x 1/4"
H	310P140	Washer, #10 (3 qty.)
I	308P101	Nut, #8-32 (3 qty.)
J	306P101	Nut, Hex, #6-32
K	306P123	Screw, #6-32 x 7/8"
L	308P145	Nut, Hex Acorn, #8-32
M	100P900	Label, Service

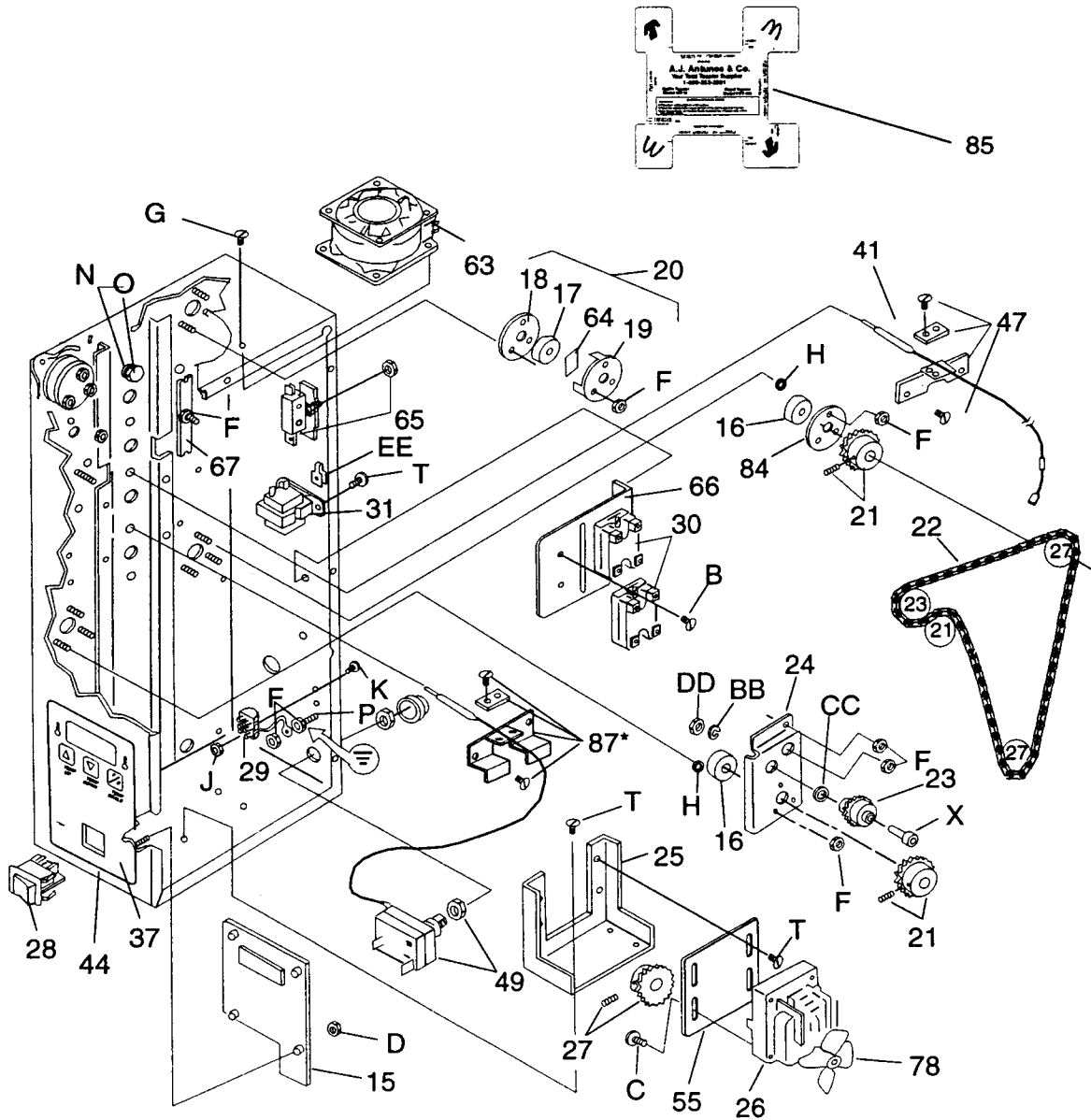
ITEM NO.	PART NO.	DESCRIPTION
N	325P104	Washer, 1/4"
O	325P109	Screw, 1/4-20 x 1/2"
P	308P124	Screw, 1-Way, #8-32 x 1/2"
R	10P1022	Label, Heaters
S	212P111	Spacer
T	308P133	Screw, #8-32 x 1/4"
U	308P120	Screw, #8-32 x 5/8"
V	308P104	Screw, #8-32 x 3/8"
W	308P105	Screw, #8-32 x 1/2"
X	331P103	Shoulder Bolt, 5/16-18 x 1"
	040P111	Bushing, Shorty, 1/2"
Z	306P105	Screw, #6-32 x 1/2"
BB	331P106	Lockwasher, 5/16"
CC	212P118	Flat Washer, 5/16"
DD	331P101	Nut, Hex, 5/16 x 18"
EE	300P102	Nut, Tinnerman (2 qty.)





▶ NOTE: Hardware list for items A-Z and BB-EE is on page 18.





\* Units Manufactured prior to Serial Number #0812----

- ← Screw 310P115
- ← Plate 0503446
- ← Retainer 0503444
- ← Guard 0503518

▶ NOTE: Hardware list for items A-Z and BB-EE is on page 18.

(Illustration on page 19, 20 &amp; 21.)

ITEM NO.	PART NO.	DESCRIPTION
1	0011266	Conveyor Belt (Crown)
	0800204	1/2" Pitch Link, Small (2 qty.)
	0800121	3/4" Pitch Link, Large (38 qty.)
2	0011264	Conveyor Belt (Heel)
	0800204	1/2" Pitch Link, Small (4 qty.)
	0800121	3/4" Pitch Link, Large (37 qty.)
3	2150117	Idler Shaft (2 qty.)
4	0011295	Conveyor Cover Assembly, Front (Heel/Club)
5	0011296	Conveyor Cover Assembly, Rear (Crown)
6	0011242	Tensioner Assembly, Front (2 qty.)
7	0011262	Tensioner Assembly, Rear (2 qty.)
8	0800332	Rod, Conveyor Cover (4 qty.)
9	2150190	Sprocket (8 qty.)
10	7000199	Spacer Kit (2 qty.)
11	0503414	Control Cover
12	1001028	Label, Holster
13	2150118	Drive Shaft (2 qty.)
14	0700482	Power Cord/Plug, Pin & Sleeve (Std.) Mfg. No. 9200500
	0700495	Power Cord/Plug, Twist & Lock Straight Mfg. No. 9200502
	0700577	Power Cord/Plug, Twist & Lock Angle Mfg. No. 9200504
15	7000171	Control Board
16	2150158	Ball Bearing (2 qty.)
17	2150186	Teflon Bearing (6 qty.)
18	0503459	Bearing Retainer/Spacer (6 qty.)
19	0503376	Bearing Retainer (6 qty.)
20	7000167	Bearing & Retainer Kit (Includes #17, 18, 19 & 79)
21	2150181	Drive Sprocket (2 qty.)
22	2150187	Drive Chain

ITEM NO.	PART NO.	DESCRIPTION
23	0011299	Idler Sprocket & Bearing
24	0501232	Bracket, Idler Sprocket
25	0503330	Bracket, Motor Mounting
26	7000175	Drive Motor Kit (Includes #78)
27	2150129	Sprocket, Motor
28	4010137	Rocker Switch, On/Off (250 VAC)
29	4060355	Terminal Block
30	405K125	Relay, Solid State (2 qty.)
31	4010187	Transformer
32	7000183	Conveyor Belt Wrap (Pack of 2)
33	7000186	Roller Tensioner Assembly (Pack of 2)
34	0021164	Bun Feeder
35	0503453	Tensioner Bracket, Right (2 qty.)
36	0503452	Tensioner Bracket, Left (2 qty.)
37	1001006	Label, Control
38	100P1026	Label, Dial (Pack of 10)
39	2100253	Knob, Control (2 qty.)
40	0503416	Cover, End Housing
41	4050214	Thermocouple Assembly
42	0021175	Weldment, End Housing
43	7000110	Release Sheet (Pack of 3)
	7000111	Release Sheet (Pack of 10)
44	0021174	Control Housing
45	7000121	Slide Rail Kit (Includes 2 Slide Rails for Tensioners) (2 qty.)
46	0021183	Conveyor Cam (2 qty.)
47	7000176	Thermocouple Retainer Kit
48	0503443	Panel, Rear
49	4030332	High Limit Thermostat
50	0400315	Strain Relief
51	0400138	Locknut, 1/2"
52	0503405	Base, Outer
53	4030325	Heater, Bun Landing

ITEM NO.	PART NO.	DESCRIPTION
54	0503407	Base, Inner
55	0503155	Bracket, Motor
	0700570	Wire Set
57	0200211	Gasket, Base
58	0503425	Bun Chute
59	4030327	Auxiliary Heater, Air (2 qty.)
60	7000165	Auxiliary Thermocouple Kit
61	7000191	Platen (208 VOLT)
62	0021182	Weldment, Fan Duct
63	4000138	Axial Fan
64	2100252	Teflon Tape (6 qty.)
65	4010107	Interlock Switch (2 qty.)
66	0503359	Bracket, Relay
67	0503150	Heater Clip (2 qty.)
68	0011277	Conveyor Wrap Installation Tool
69	303P125	Hinge Pin, Belt Wrap (Pk. of 10) (2 qty.)
69A	303P127	Hinge Pin, Belt Wrap (Pk. of 10) (2 qty.) (Larger diameter used on all belts shipped after 10-1-98)

ITEM NO.	PART NO.	DESCRIPTION
70	0021166	Holster
71	1001023	Label, Caution Hot
72	0503368	Fascia, Bun Stop
73	0900225	Bun Stop
74	0021176	Conveyor Cover (2 qty.)
75	0400312	Teflon Damper (2 qty.)
76	0503367	Clamp, Damper (2 qty.)
77	0503321	Bracket, Auxiliary Thermocouple
78	4000165	Fan Blade, Motor
79	2100256	Teflon Tape (6 qty.)
80	0011301	Damper Support Assembly (2 qty.)
81	0503455	Tension Spring, Inner (4 qty.)
82	2100259	Slide Bar (4 qty.)
83	0502199	Spacer (8 qty.)
84	0500464	Retainer, Bearing
85	0900228	Bun Gauge
86	0700579	Wire Set
87	7000203	Thermocouple Retainer/ Chain Guard Kit

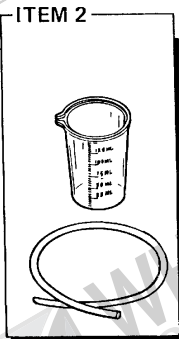
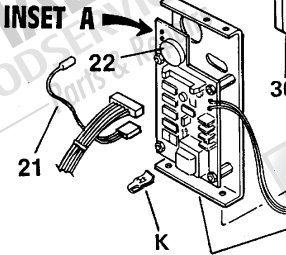
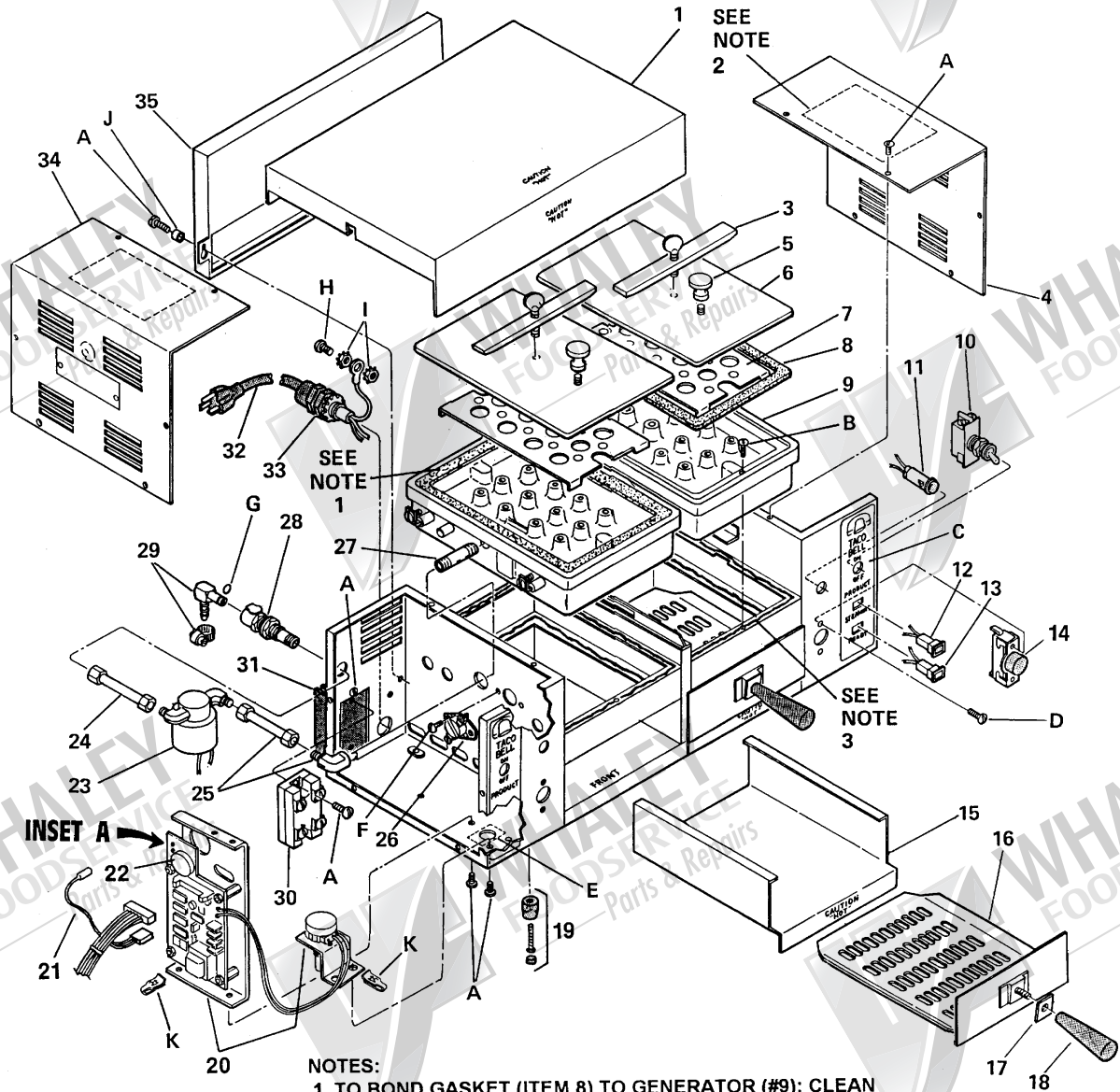
### WWW.WHALEYFOODSERVICE.COM

At our website you can:

- place a parts order
- view or print an instruction manual
- retrieve a parts list
- determine daily maintenance schedules
- look-up parts by manufacturer, equipment model, or part number
- record your own specific equipment and model numbers

TBS-2RR/1RR  
SERIES 9070500

# Taco Bell Steamer



- NOTES:**
1. TO BOND GASKET (ITEM 8) TO GENERATOR (#9); CLEAN SURFACES OF GENERATOR AND GASKET WITH ALCOHOL; APPLY A THIN LAYER OF DOW-CORNING #732AL\* ADHESIVE TO GENERATOR AND PRESS GASKET INTO PLACE. ALLOW TO DRY FOR AT LEAST 12 HOURS.
  2. A WIRING DIAGRAM IS MOUNTED ON THE INSIDE OF EACH ACCESS COVER.
  3. IF GENERATOR (#9) IS REMOVED, CLEAN ALL SURFACES WITH ALCOHOL TO REMOVE OLD SEALANT. APPLY A 1/8" BEAD OF DOW-CORNING #732AL\* ADHESIVE ON MATING SURFACES AS SHOWN. PRESS GENERATOR INTO PLACE AND TIGHTEN SCREWS. ALLOW TO DRY AT LEAST 12 HRS.



ITEM NO.	PART NO.	DESCRIPTION	TBS-2RR QTY.	TBS-1RR QTY.
1	0010283	Top Cover (TBS-2RR)	1	0
	0010284	Top Cover (TBS-1RR)	0	1
2	0010249	Calibration Kit	1	1
3	0010289	Beam Assembly	2	1
4	0502186	Access Cover	2	1
5	2100154	Knob	2	1
6	0010290	Generator Cover	2	1
7	0500978	Diffuser Plate	2	1
8	7000115	Gasket	2	1
9	010K184	Generator	2	1
10	401K115	Power Switch	2	1
11	4060198	Power-On Light	2	1
12	406K178	"Steaming" Telite	2	1
13	406K179	"Ready" Telite	2	1
14	4010106	Operate Button	2	1
15	0500961	Liner	2	1
16	0010287	Spatula (Includes Items 17 & 18)	2	1
17	2100155	Handle Guard	2	1
18	2100107	Handle	2	1
19	210K230	Bumper, 1" Leg Kit (Includes Screws and Bumper Covers)	1	1
20	407K002	Control Board Assembly	2	1
	407K002R	Rebuilt Control Board Assembly	2	1
21	4050135	Thermocouple	2	1
22	4020189	Audio Signal	2	1
23	0010575	Solenoid Kit	2	1
24	200K128	Inlet Tube Kit	2	1
25	200K136	Solenoid Tube Kit	2	1
26	4030222	High Limit Thermostat (450°F, +/- 10°)	2	1
27	2190103	Generator Tube	2	1

ITEM NO.	PART NO.	DESCRIPTION	TBS-2RR QTY.	TBS-1RR QTY.
28	208K106	Quick Disconnect Body	2	1
29	208K105	Quick Disconnect Insert	2	1
30	405K125	Solid State Relay	2	1
31	4050180	Heat Sink	2	1
32	0700323	Power Cord	2	1
33	040K251	Strain Relief	2	1
34	0502186	Access Cover	1	1
35	0020802	Chimney Weldment (TBS - 2RR)	1	0
	0020801	Chimney Weldment (TBS - 1RR)	0	1
	0700236	Wire Harness	2	1
	209K108	Water Filtration System	2	1

► NOTE: The following items are available in packages of 10 each.

ITEM NO.	PART NO.	DESCRIPTION
A	308P157	#8-32 Self-Tap Phillips Head Screw (3 qty.)
B	306P125	#6-32 x 3/8" (10 mm) Flathead Screw
C	100P647	Label - Taco Bell
D	306P104	#6-32 x 1/4" (6mm) Truss Head Screw
E	100P402	Label - Increase/Decrease
F	308P103	#8-32 x 1/4" (6 mm) Truss Head Screw
G	020P117	O-Ring
H	308P124	#8-32 x 1/2" (13mm) One Way Screw
I	308P143	#8-32 "Keps" Hex Nut
J	05P2199	Spacer
K	300P102	Tinnerman
	406P108	Wire Nut Connector